

East Helena Former Asarco Smelter Public Meeting & Open House January 18, 2012

**US Environmental Protection Agency
Montana Environmental Custodial Trust
City of East Helena
Lewis & Clark County (BOH/WQPD)**



US Environmental Protection Agency East Helena Site

- Welcome
 - ✧ The Honorable Anthony Strainer, Mayor, City of East Helena
 - ✧ Betsy Burns, EPA RCRA Project Officer & CERCLA RPM
- Goals of Public Meeting/Open House
 - ✧ Update public and stakeholders
 - ✧ Solicit input/answer questions
 - ✧ Celebrate our success
- Overview of program/agenda
 - ✧ Presentations by EPA, Custodial Trust & BOH
 - ✧ Open House



US Environmental Protection Agency

East Helena Site

Betsy Burns
US EPA - 8
CERCLA RPM
RCRA Project Officer

CERCLA (Superfund)

EPA Special Account

- ✓ Residential Soils
- ✓ Institutional Controls

RCRA Corrective Action



US Environmental Protection Agency

East Helena CERCLA Accomplishments To Date

- 1,568 Properties Cleaned To Date
 - ✧ 787 Residential Yards
 - ✧ 781 Roads, Commercial Properties, etc.
- Third Five-Year Review
- Cooperative Agreements
- Draft Institutional Controls
- SRI Design Charrette



US Environmental Protection Agency (EPA) – Region 8: East Helena Site

Betsy Burns
US EPA - 8
CERCLA RPM
RCRA Project Officer

CERCLA (Superfund)

EPA Special Account

- ✓ Residential Soils
- ✓ Institutional Controls

RCRA Corrective Action

Montana Environmental
Custodial Trust

- ✓ Groundwater (As & Se Plumes)
- ✓ Sale/Redevelopment





Montana Environmental Custodial Trust

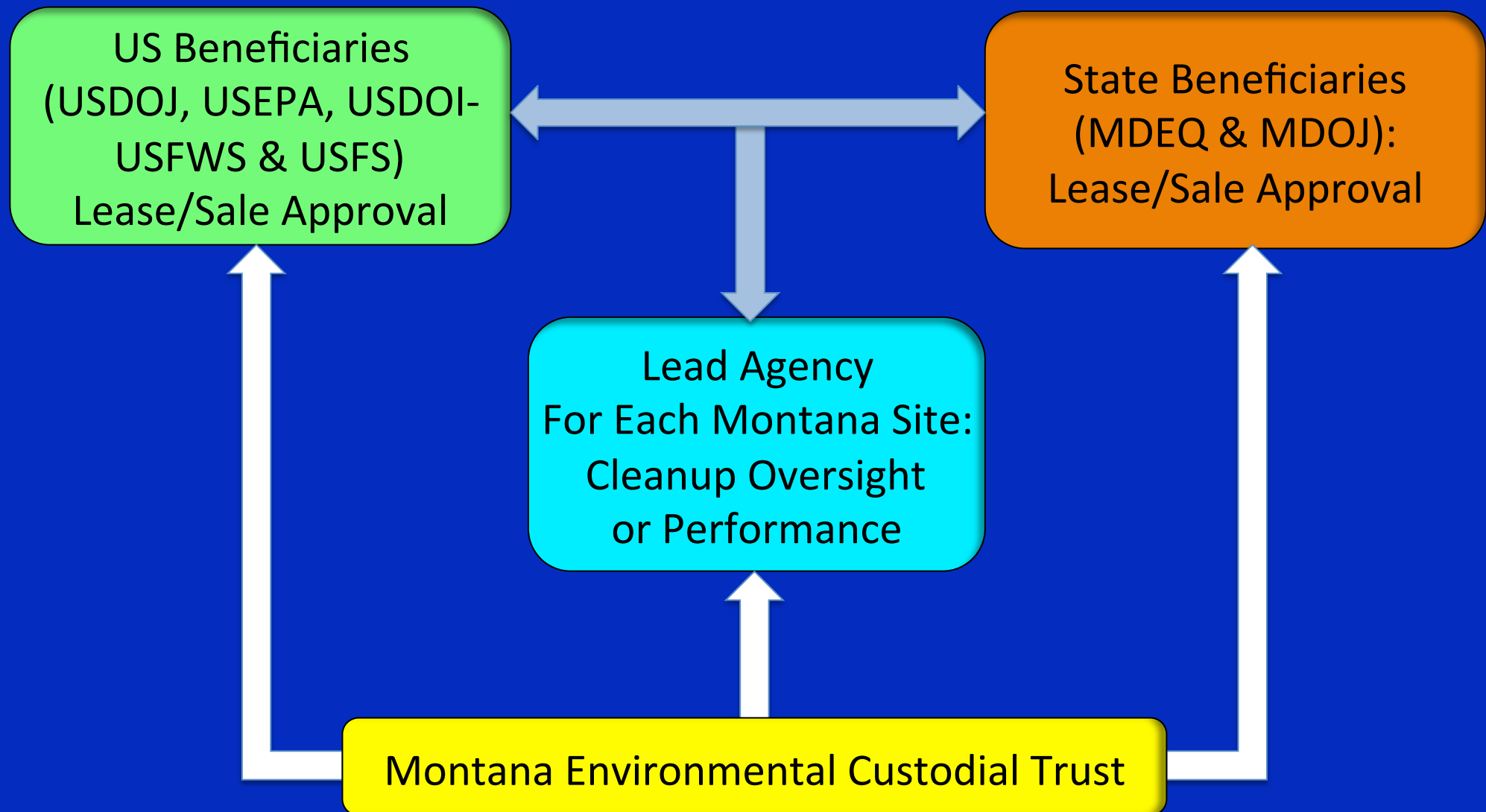
Purpose & Responsibilities

- Created by Asarco bankruptcy settlement
- Own 4 Asarco properties in Montana
- Manage site-specific cleanup funds for US and State
- Cleanup sites under direction of US and State
- US and State must approve land sale
- Sale proceeds to help fund cleanup
- Fiduciary duty to US and State (Beneficiaries)



Montana Environmental Custodial Trust

Organization & Beneficiaries



Montana Environmental Custodial Trust East Helena Team

US Beneficiaries:
USDOJ & USFWS/USDOJ
*Karen Nelson,
Elliott Rockler &
Alan Tenenbaum*

Lead Agency: USEPA
*Betsy Burns
Julie DalSoglio, Joe Vranka,
Chuck Figur, Randy Breeden
& Nikia Green*

State Beneficiaries:
MDOJ/NRD & MDEQ
*Denise Kirkpatrick,
Rob Collins, Greg Mullen,
Mary Capdeville,
Jim Stimson & Mark Hall*

Montana Environmental Custodial Trust
East Helena Director of Cleanup & Redevelopment
Cindy Brooks
East Helena Director of Legal & Regulatory Affairs
Marc Weinreich

Other Professionals
*Galusha (CPA)
Garlington (Legal)
Treasury Partners
(Fund Management)*

Reuse Studies
*CTA and
MXD Strategies*

Assistant
Project Manager
Garrett Thompson

RCRA
Project Manager
Jim Ford

Environmental Team
*CH2MHill, Hydrometrics,
Pioneer (PTS), DJ&A
Morrison & Maierle,
Applied Geomorphology,
GSI-WS and others*

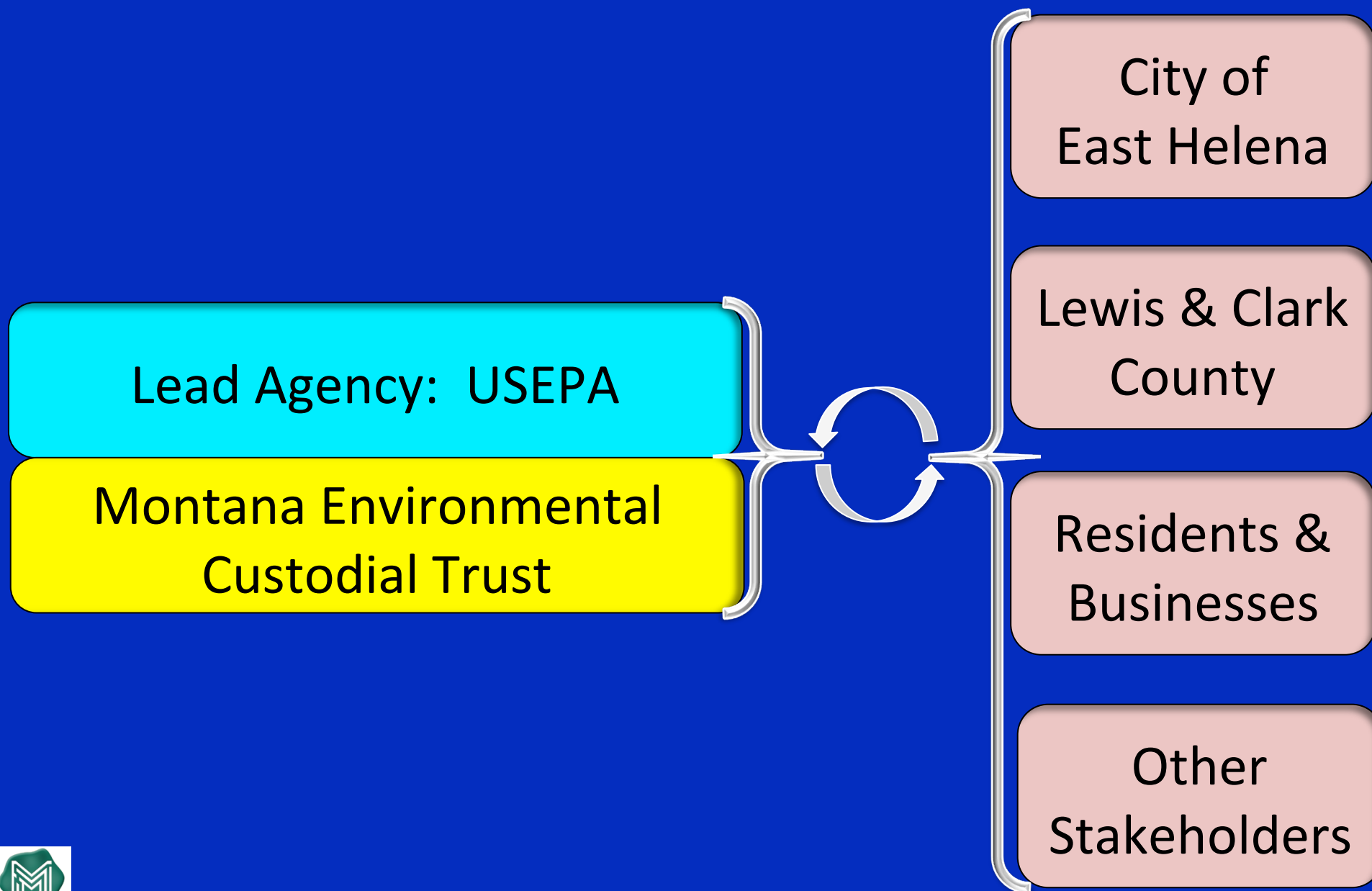
Operations
Site Manager
Blaine Cox

Operations Team
*TS Consulting
Hydrometrics
Paul Brox*

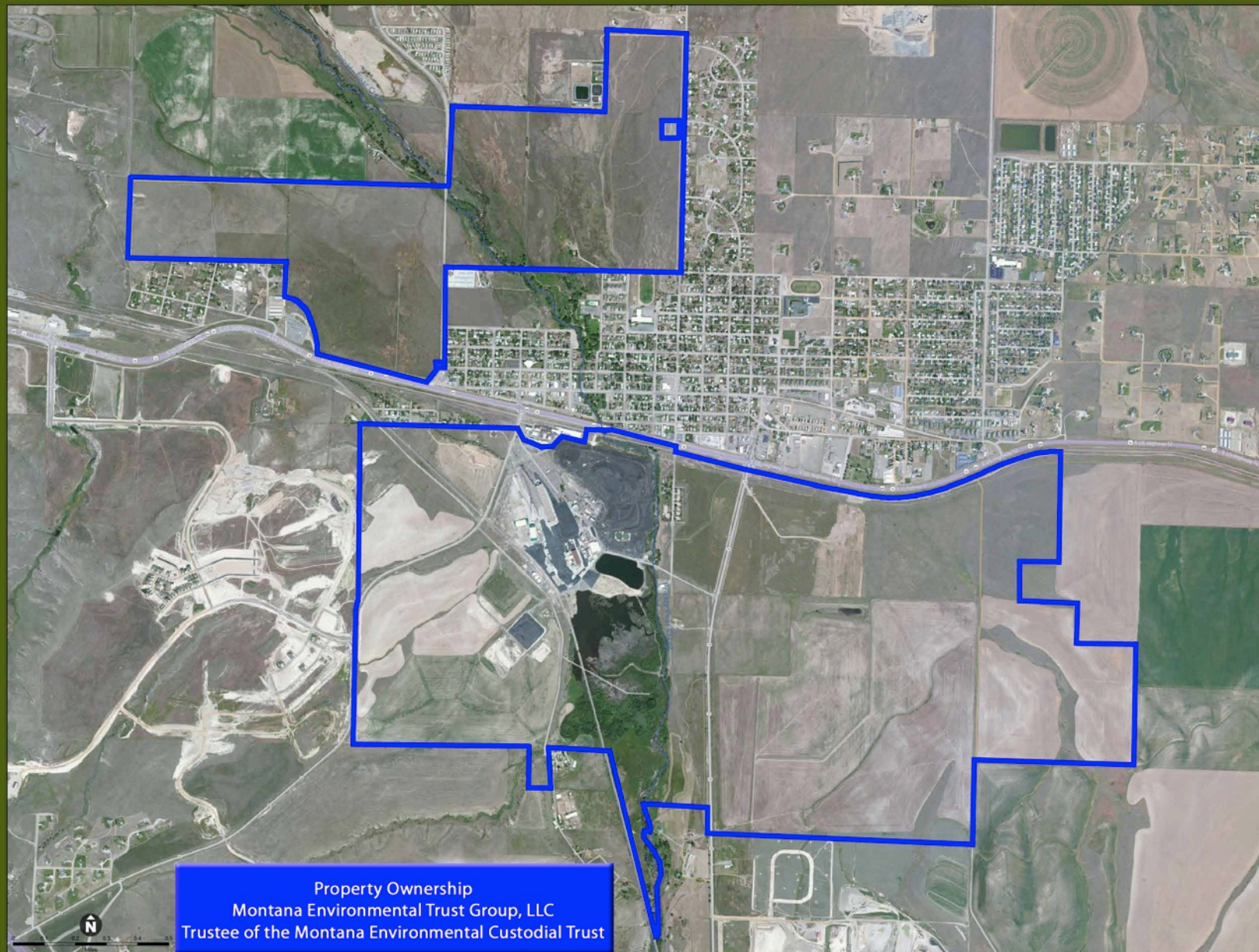


Montana Environmental Custodial Trust

East Helena Critical Stakeholder Communications



Montana Environmental Custodial Trust East Helena Property



Property Ownership
Montana Environmental Trust Group, LLC
Trustee of the Montana Environmental Custodial Trust



Montana Environmental Custodial Trust

Site Cleanup Progress & Accomplishments

- Site Investigations and Studies
 - ✧ Phase II RFI
 - ✧ Risks Assessment (Eco & Human Health)
 - ✧ Selenium Plume
 - ✧ Field Sampling/Plan (>200 Wells)
 - ✧ Corrective Measures Studies
 - ✧ Contaminant Models (conceptual & gw)
 - ✧ Data Management
- Interim Measures (South Plant Hydraulic Control)
- Long-Term Plans



Montana Environmental Custodial Trust Site Cleanup Progress & Accomplishments

- First Slag Sale
- Former Asarco Housing
 - ✧ Recycling/donations to Habitat for Humanity
 - ✧ Former Manager's House
- Community Events (Rodeo, FunRun, July 4th)
- Transfers to City and County
- Renewable Energy Grant Support
- Redevelopment Planning Studies



Status & Major Milestones

East Helena Redevelopment Planning Studies

- Retained CTA Architects – Engineers/MXD Strategies 10/11
- 3-Phase Scope
 - ✧ I-Opportunities & Constraints (O&C) Plans
 - ✧ II-Preliminary Market Study
 - ✧ III-Redevelopment Concept Plans
- First draft of Phase I & II under beneficiary review
- Draft stakeholder reviews 3/12 or 4/12
- Phase III draft (Redevelopment Concepts) 5/12
- Expect “Redevelopment Open House” 6/12 or 7/12









“To improve and protect the health of
all Lewis and Clark County Residents.”

Melanie Reynolds, Health Officer
Kathy Moore, Environmental Services Administrator
Jan Williams, Environmental Health Specialist
Debra Tillo, Environmental Health Specialist



What are institutional controls?

Administrative or legal controls that help minimize the potential for human exposure to contamination and protect the integrity of remedy by limiting land or resource use.

- **Informational** - advisories
- **Proprietary** – legal tools like deed restrictions
- **Governmental** – regulations by state or local government
- **Enforcement & permitting** – administrative orders, consent decrees and permits

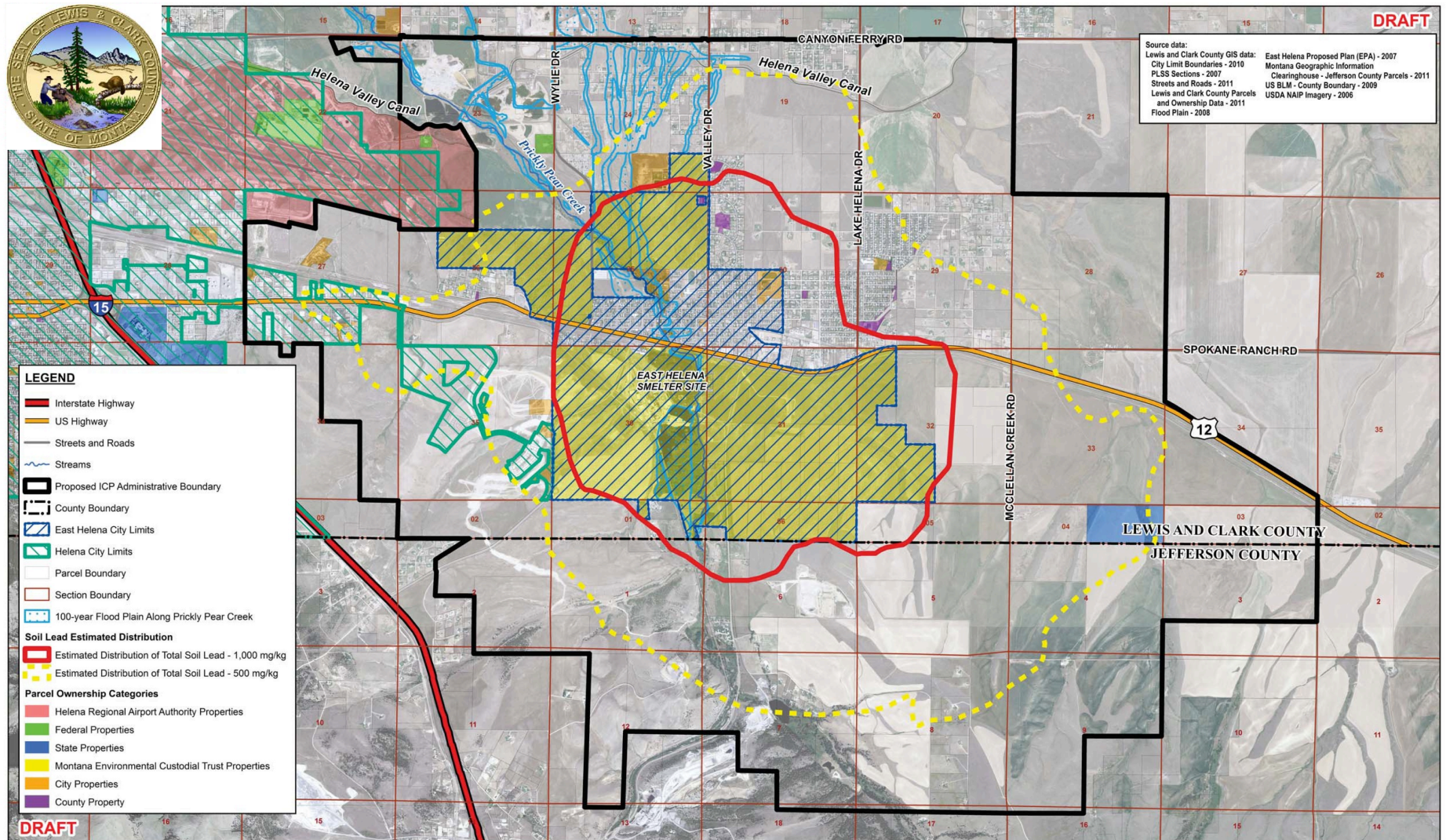


Potential ICs in East Helena

- Lead Education and Abatement Program
- Soils excavation permit to manage contaminated soil
- GIS mapping of cleaned up properties
- Contractor certification and education
- Coordination with counties and cities
- Clean up oversight, sampling protocol



Draft ICP Administrative Boundary



Status of the Institutional Controls Plan for East Helena

- A draft plan is currently being developed
- Once the plan and its details are in place, stakeholders and public will be asked to review and comment
- A final plan must meet requirements in the EPA 2009 Record of Decision.
- Regulatory components must be adopted by a government agency, in this case LCC Health



Who is working on the draft ICP?

- Lead Education and Abatement Program
- City of East Helena
- Lewis and Clark County Planning
- Jefferson County
- Montana Business Assistance Connection
- US EPA
- Montana DEQ
- Montana Environmental Custodial Trust
- TerraGraphics Environmental Engineering, Inc.
- Peccia and Associates
- Others



What comes next?

- Draft ICP will be presented to public and other stakeholders
- Public meetings to discuss ICP
- Periodic updates through newsletters or email
- Sign up at the table during the open house tonight or in Room 201, East Helena City Hall
- Watch newspapers or website for meetings





Concluding Remarks & Introduction To Open House



Julie DalSoglio
Director, USEPA Region 8
Montana Operations



Please visit us at: www.mtenvironmentaltrust.org