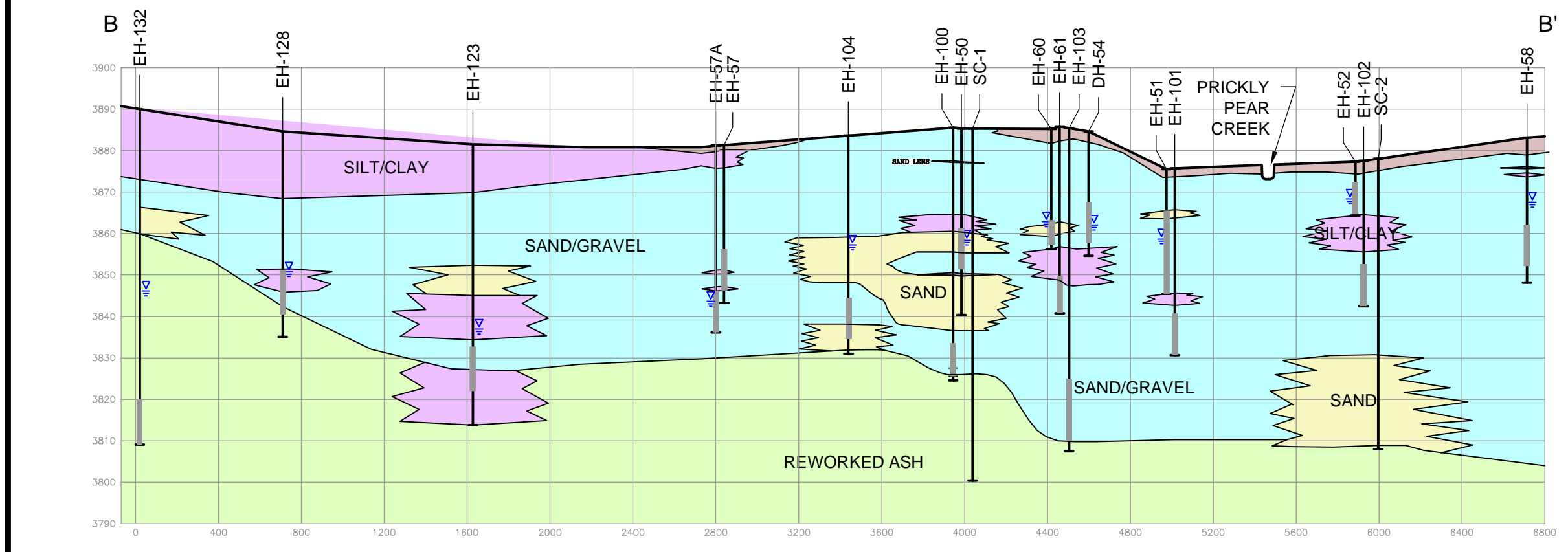
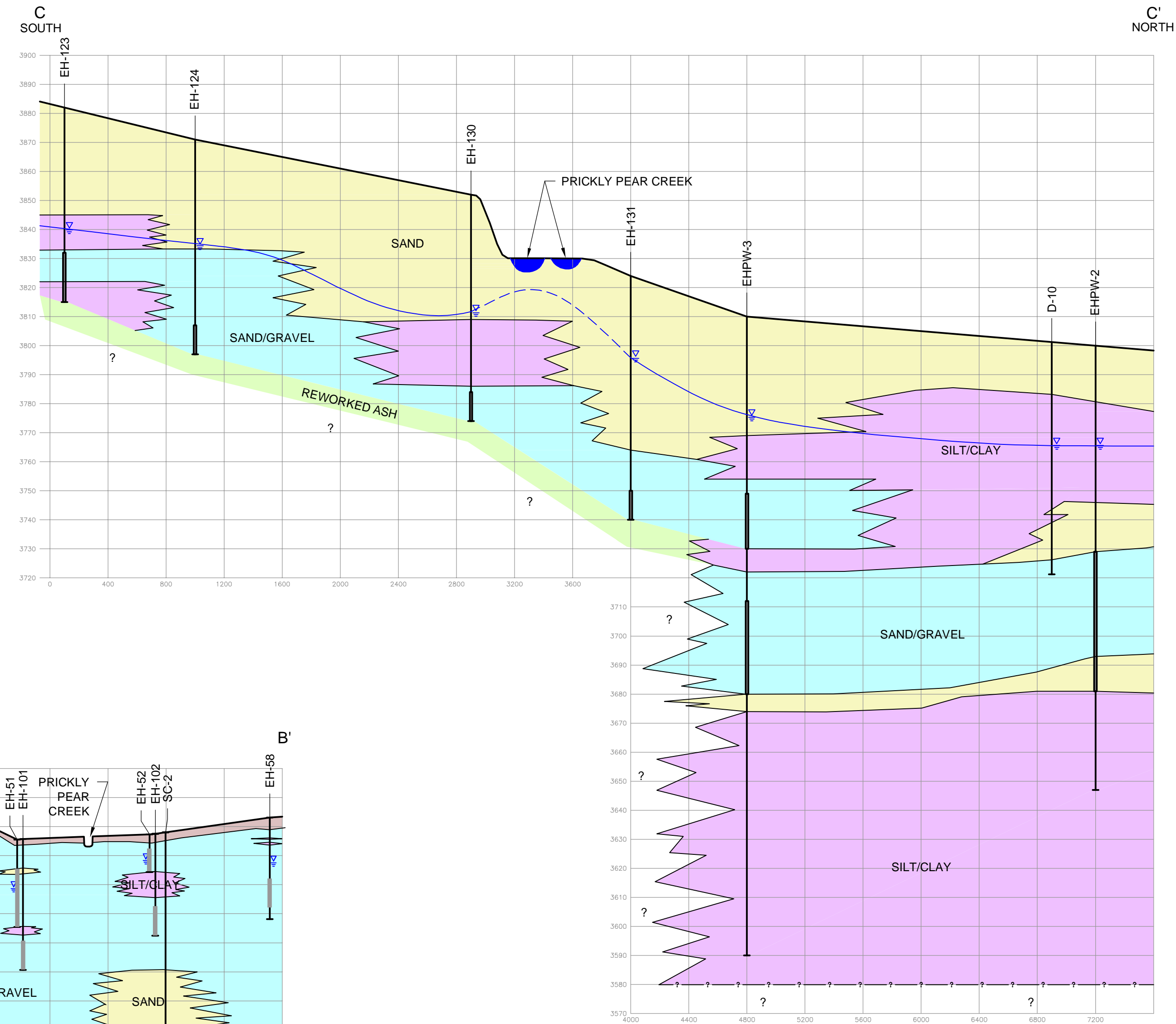


SECTION A-A'
SCALE: (H) 1"=600' (V) 1"=30'

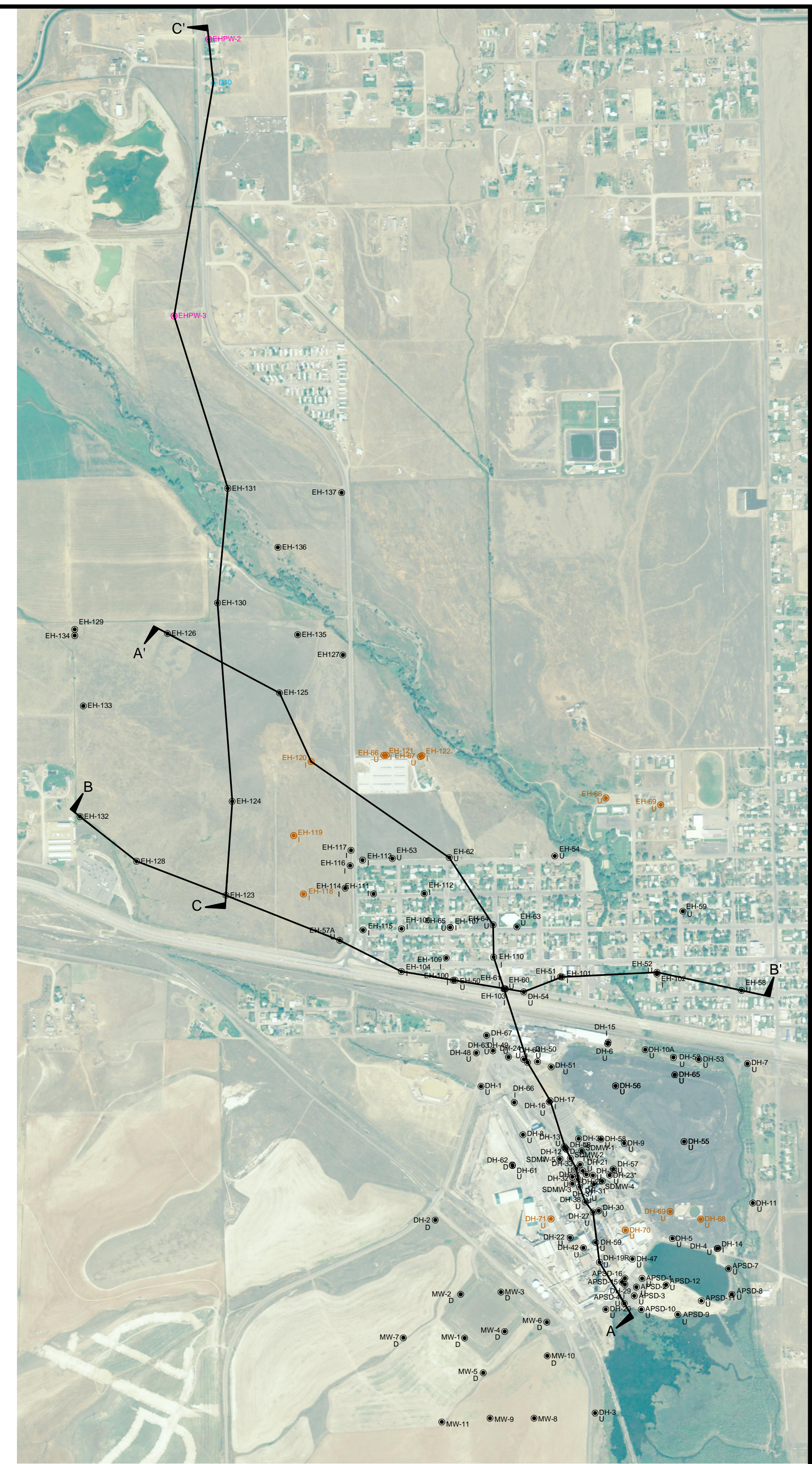
- LEGEND**
- WELL IDENTIFICATION
 - TOP OF WELL
 - GEOLOGIC CONTACT (DASHED WHERE INFERRED)
 - WATER LEVEL
 - TOTAL DEPTH OF WELL OR BORING
 - SCREEN INTERVAL
 - MONITORING WELL OR BORING
- FILL, COMMONLY CONSISTS OF INTERMIXED SAND, SILT, CLAY AND GRAVEL. OFTEN INCLUDES WASTE CONSTITUENTS INCLUDING BRICKS, WOOD, COBBLES, SLAG, OTHER DEBRIS AND CONCRETE.
- FINE-GRAINED DEPOSITS CONSISTING OF INORGANIC SILTS AND CLAYS.
- SAND, WELL-SORTED TO SILTY, UNCONSOLIDATED ALLUVIUM; GENERALLY LENTICULAR AND HETEROGENEOUS.
- ALLUVIAL SAND AND GRAVELS, WITH VARIABLE AMOUNTS OF SILT OR CLAY.
- REWORKED ASH, FINE GRAINED SEDIMENTS CONSISTING OF VOLCANIC ASH-TUFF AS WELL AS CLAYS DERIVED FROM THESE VOLCANIC DEPOSITS.
- BLACK-GRAY HYDROCARBON STAINING, OBSERVED AT SEVERAL SMELTER SITE LOCATIONS.



SECTION B-B'
SCALE: (H) 1"=600' (V) 1"=30'



SECTION C-C'
SCALE: (H) 1"=600' (V) 1"=30'



SECTION LOCATION MAP
SCALE: 1"=800'

Hydrometrics, Inc.
Consulting Scientists and Engineers
Helena, Montana 59601
3020 Bozeman Avenue
(406) 443-4150

**PHASE II RCRA FACILITY INVESTIGATION
SITE CHARACTERIZATION WORK PLAN
ASARCO EAST HELENA FACILITY**

GEOLOGIC CROSS SECTIONS

DRAWING FILE NUMBER
105408H009
AUTOCAD 2000 DRAWING (DWG)
EXHIBIT
3