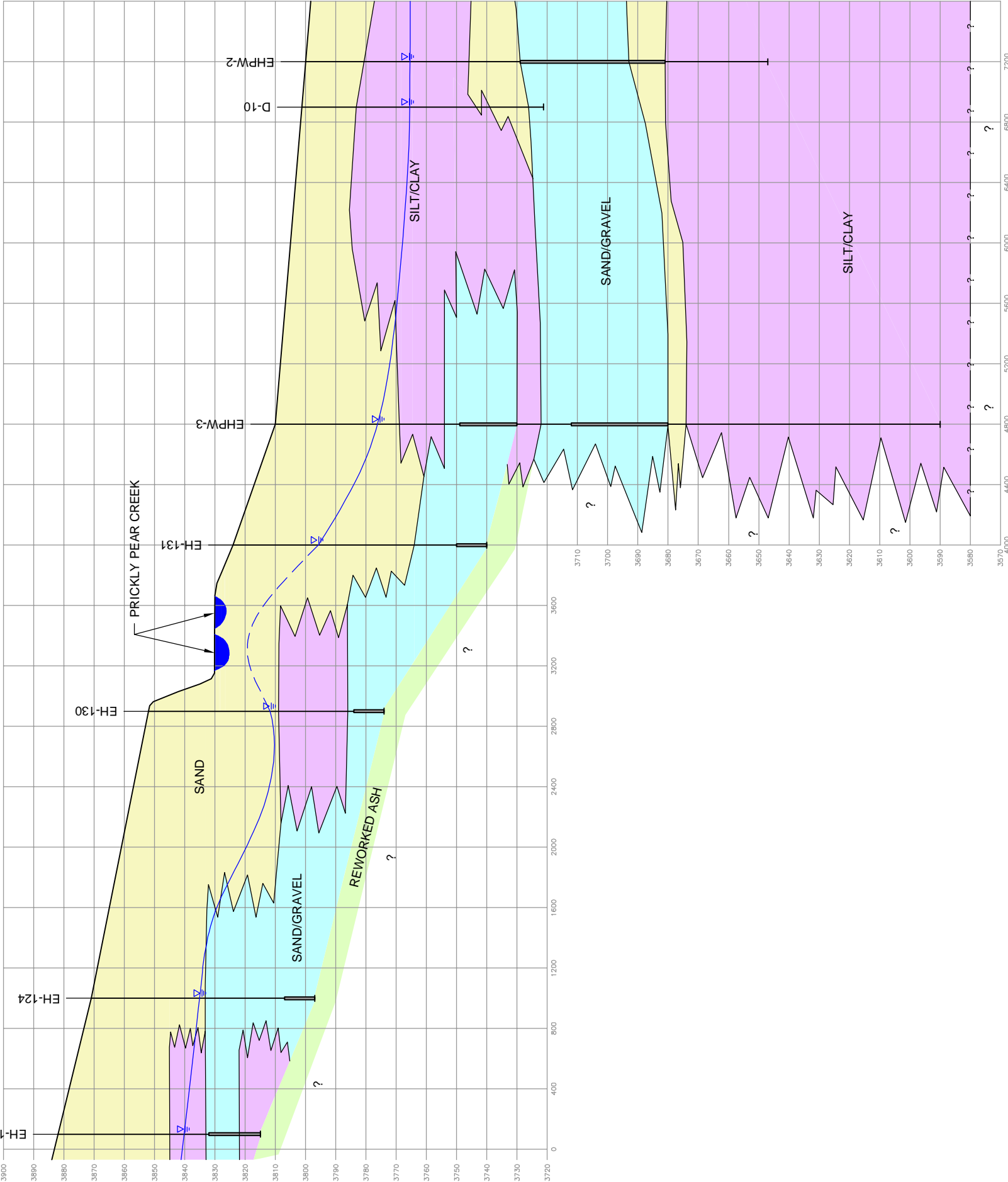
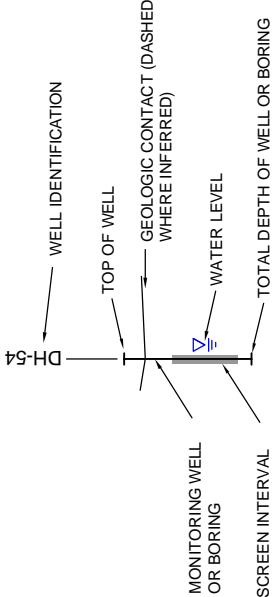


C SOUTH C' NORTH



LEGEND



- FINE-GRAINED DEPOSITS CONSISTING OF INORGANIC SILTS AND CLAYS.
- SAND, WELL-SORTED TO SILTY, UNCONSOLIDATED ALLUVIUM; GENERALLY LENTICULAR AND HETEROGENEOUS.
- ALLUVIAL SAND AND GRAVELS, WITH VARIABLE AMOUNTS OF SILT OR CLAY.
- REWORKED ASH, FINE GRAINED SEDIMENTS CONSISTING OF VOLCANIC ASH-TUFF AS WELL AS CLAYS DERIVED FROM THESE VOLCANIC DEPOSITS.

SECTION C-C'

SCALE: (H) 1"=600' (V) 1"=30'

PHASE II RCRA FACILITY INVESTIGATION
SITE CHARACTERIZATION WORK PLAN
ASARCO EAST HELENA FACILITY

FIGURE

GEOLOGIC CROSS SECTIONS

2-3-3