



Prickly Pear Land Trust East Helena Greenway Project

The East Helena Greenway Project, which was first envisioned by the community 10 years ago, is now on the path to full-fledged reality as a result of the transfer of 322 acres of former ASARCO lands to Prickly Pear Land Trust (PPLT). On December 30, after years of multi-stakeholder coordination and collaboration, the Montana Environmental Trust Group, LLC (METG) conveyed title to 242 acres along the reconstructed Prickly Pear Creek (PPC) corridor south of Highway 12 and approximately 80 acres along PPC near Kennedy Park in East Helena to PPLT for development of an 8-mile trail system on remediated and revitalized former ASARCO lands. (See map on page 2.) PPLT will work with the State of Montana Natural Resource Damage Program (NDRP) on design, construction and maintenance of the Greenway recreational access and educational amenities, using the \$3.2 million allocated to the Greenway Project in the NRDP East Helena Natural Resource Restoration Plan that Governor Bullock approved in 2019. The trail system will provide land and water access for all, connecting East Helena to Montana City along Prickly Pear Creek. The land transfer to PPLT culminates a 10-year partnership between all three levels of government, the community and the private sector.

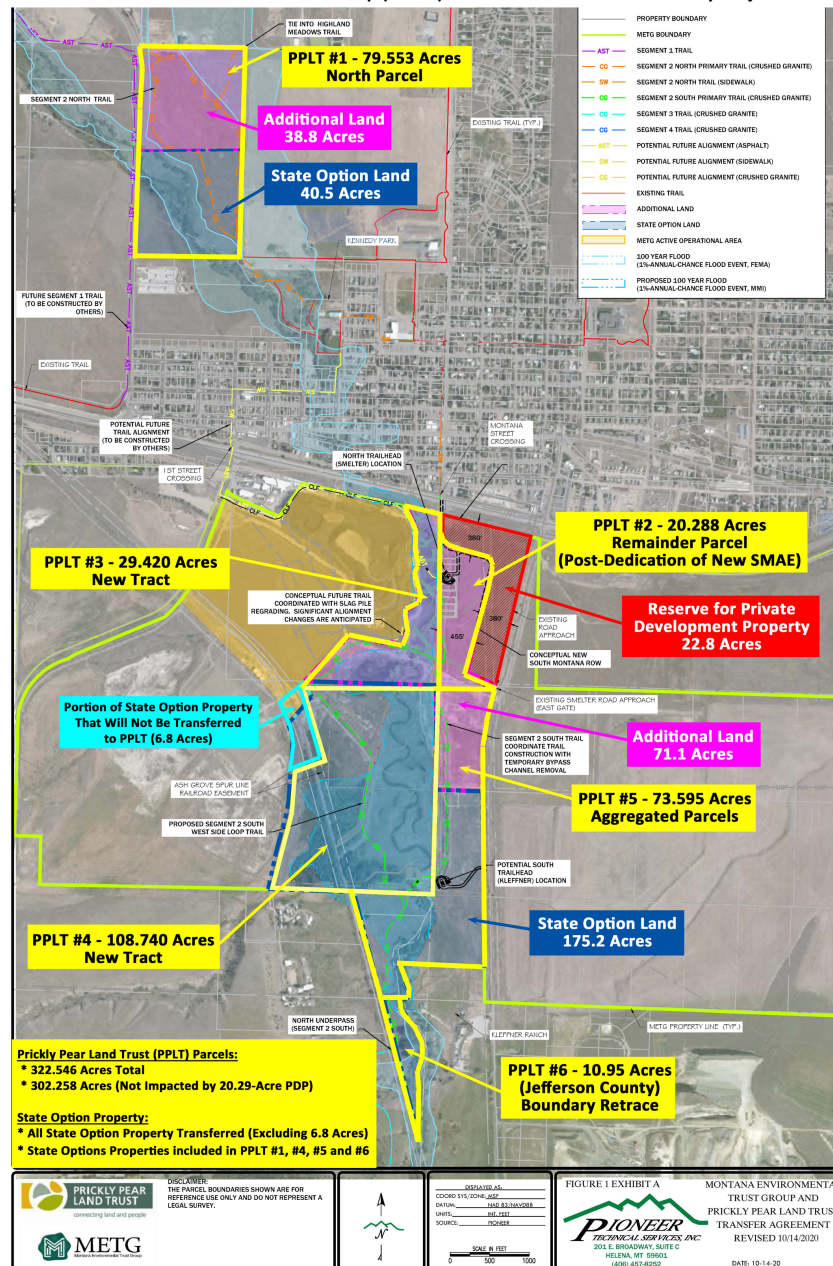


The Greenway Project offers a new beginning for lands and waters in East Helena and exemplifies how a community can honor its industrial past while positioning itself for economic opportunity, community health and quality of life. The former smelter lands near the newly constructed East Helena Public Schools (EHPS) elementary and high schools will be transformed into a trail system that will connect East Helena to Montana City. Once the Greenway trail and amenities are fully developed, PPLT will transfer the 322 acres to the East Helena Public Schools (EHPS) that has agreed to serve as the long-term steward of the Greenway land. Where possible, the trail will be Americans with Disabilities Act (ADA) accessible to encourage people of all ages and abilities to enjoy this community asset. The land remains closed to the public until public access has been established.

Prickly Pear Land Trust Greenway Project Partners

City of East Helena
 East Helena Public Schools
 US Environmental Protection Agency
 US Fish & Wildlife Service
 Montana Natural Resource Damage Program
 Montana Department of Environmental Quality
 Lewis and Clark County
 Montana Environmental Trust Group

The parcels (outlined in yellow) were transferred to Prickly Pear Land Trust (PPLT) from Montana Environmental Trust Group (METG) on 12-30-2020 for the Greenway Project.



For more information about Prickly Pear Land Trust and the Greenway Project contact:

Mary Hollow (PPLT), 406-240-4907, mary@pricklypearlt.org

Mayor Jamie Schell (City of East Helena), 406-227-5321, mayorschell@easthelenamt.us

Ron Whitmoyer (East Helena Public Schools), 406-227-7700, rwhitmoyer@ehps.k12.mt.us

Cindy Brooks (METG), 617-448-9762, cb@g-etg.com

Betsy Burns (EPA), 406-457-5013, burns.betsy@epa.gov

Subscribe to PPLT's newsletter via www.pricklypearlt.org to stay apprised of the latest developments.