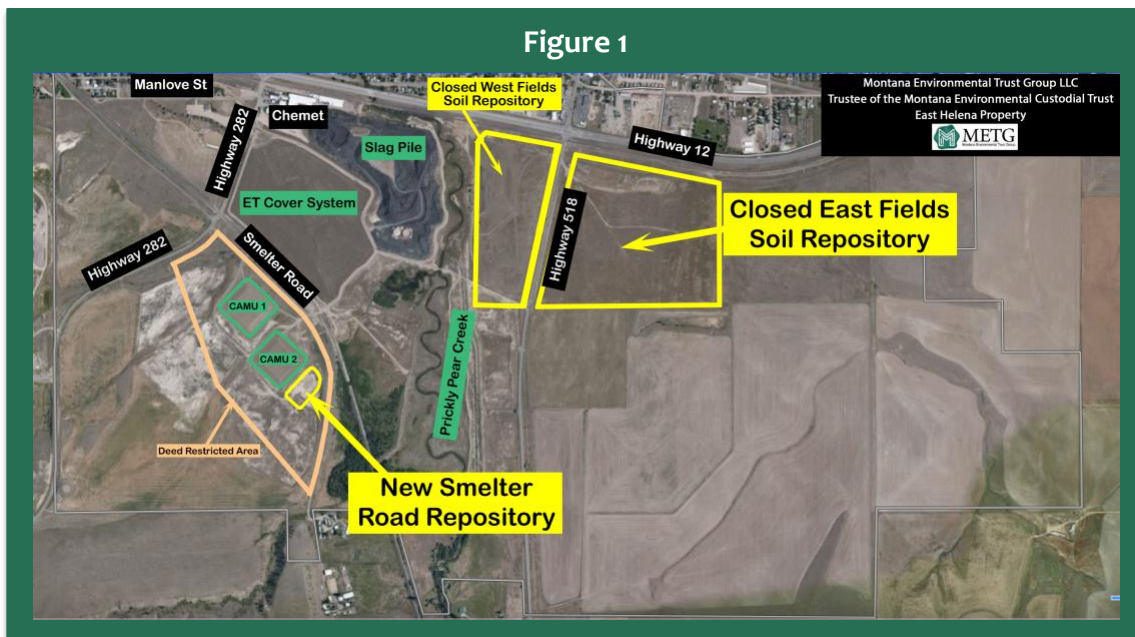


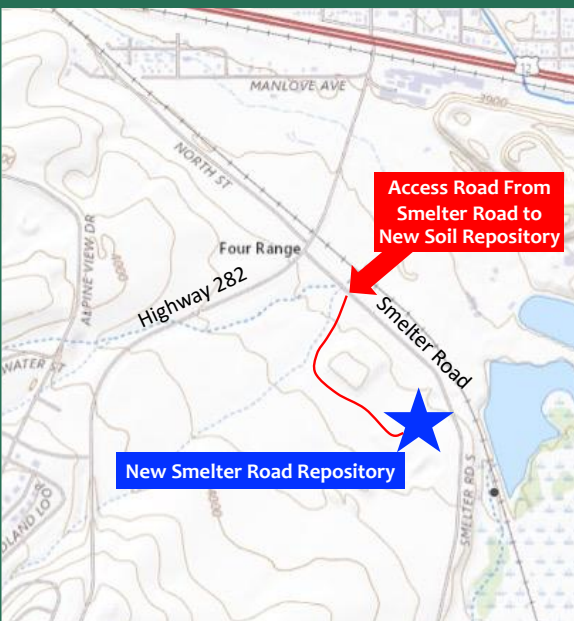
May 2023

## NOW OPEN: NEW SMELTER ROAD SOIL REPOSITORY IN EAST HELENA CLOSED: EAST FIELDS SOIL REPOSITORY

The U.S. Environmental Protection Agency (EPA) and the Montana Environmental Trust Group (METG) have closed the East Fields Soil Repository (at Highway 12 near Highway 518) and opened a new soil repository on the west side of Smelter Road. (See [Figure 1.](#)) Residents, contractors, and businesses that wish to dispose of soil at the new Smelter Road Repository must call or text in advance **Stan Hohn at 406-227-5124** or **Mark Rhodes at 406-431-1637** to arrange for the disposal of soil. See [Figure 2](#) for directions to the new Smelter Road Soil Repository.



**Figure 2**  
**Directions to Smelter Road Soil Repository**



### From Helena

Take Highway 12 (Highway 287) east toward East Helena. Turn right onto Highway 282 at traffic light. Proceed approximately 4/10 of a mile to Smelter Road. Turn left onto Smelter Road. Turn right onto the first driveway off Smelter Road.

### From Townsend

Take Highway 287 (Highway 12) west toward East Helena. Turn left onto Highway 282 at the traffic light. Proceed approximately 4/10 of a mile to Smelter Road. Turn left onto Smelter Road. Turn right onto the first driveway off Smelter Road.

### From Montana City

Take Highway 518 north toward East Helena until it ends at Highway 12. Make a left onto Highway 12 at the traffic light. Travel approximately 7/10 of a mile to the traffic light at Highway 282. Turn left onto Highway 282. Proceed approximately 4/10 of a mile to Smelter Road. Make a left turn onto Smelter Road. Turn right onto the first driveway off Smelter Road.

## IMPORTANT REMINDERS

### Soil Displacement Permit Requirements

As a reminder to residents from East Helena and nearby communities, a soil displacement permit may be required if you plan to displace or relocate one or more cubic yards of soil (approximately one truckload). Soil displacement does not include tilling if no excess soil is removed from the area. This is required under the Lewis and Clark County [Soil Ordinance](#). See “Getting a Permit is Easy and Free of Charge” below.

### Contractor Certification

Please remember that you or your contractor must be certified to displace soil. Like the soil displacement permit, certification is easy to obtain and FREE! Please contact Beth Norberg from the East Helena LEAP team at [bnorberg@lccountymt.gov](mailto:bnorberg@lccountymt.gov) or 406-447-8385 to get certified. Certification requires only a brief online tutorial and exam, or we will come to your jobsite to certify you in person.

### Getting a Permit is Easy and Free of Charge

1. Visit the East Helena Lead Education and Assistance Program (LEAP) [Website](#).
2. Complete a [Soil Displacement Permit Application](#).
3. LEAP will review your application to ensure that adequate protections are in place.
4. LEAP will issue you a permit that will provide specific conditions and precautions.
5. LEAP will conduct a brief site inspection once your excavation work is complete to confirm all permit requirements have been met.

## IMPORTANT CONTACTS

### To dispose of soil at the new Smelter Road Repository Call, Text or Email

Stan Hohn at 406-227-5124 or [tsconsultingmt@yahoo.com](mailto:tsconsultingmt@yahoo.com)  
Mark Rhodes at 406-431-1637 or [MRHODES@hydrometrics.com](mailto:MRHODES@hydrometrics.com)

### For questions about getting a permit and certification from LEAP Call or Email

Beth Norberg at 406-447-8385 or [bnorberg@lccountymt.gov](mailto:bnorberg@lccountymt.gov)

### For information about cleanup at the former ASARCO smelter in East Helena Call or Email

Bridget Williams (EPA) at 406-594-8792 or [Williams.Bridget@epa.gov](mailto:Williams.Bridget@epa.gov)  
Cindy Brooks (METG) at 617-448-9762 or [cb@g-etg.com](mailto:cb@g-etg.com)