

Former ASARCO Smelter East Helena RCRA Facility



Public Meeting
November 15, 2023

US Environmental Protection Agency
Montana Environmental Trust Group, LLC
Trustee of the Montana Environmental Custodial Trust



Montana Environmental Trust Group, LLC
Trustee of the Montana Environmental Custodial Trust

Welcome Instructions

For Zoom Users

- Unless speaking, please mute yourself by using microphone icon or pressing *6 on your phone
- You can type questions/comments in the chat box
- If your computer audio is not working, mute yourself and phone in to hear the meeting by dialing 1-646-876-9923, use meeting ID 946 584 8922# and passcode 664564#
- This meeting is being recorded. By participating, you consent to be recorded.

For All Participants

- Please introduce yourself before asking a question or making a comment
- Questions can be repeated or read from the chat

THANK YOU JOINING US!



Montana Environmental Trust Group, LLC
Trustee of the Montana Environmental Custodial Trust

Agenda

- Welcome and Introductions: Bridget Williams (USEPA)
- Remarks from the City of East Helena
- Groundwater Update: Mark Walker (Hydrometrics)
- Cleanup and Redevelopment Update: Cindy Brooks (METG)
- Greenway Trail Progress and Plans: Mary Hollow (PPLT)
- East Helena Housing Plans and Goals: Jacob Kuntz (Habitat for Humanity)
- Redevelopment Progress and Plans: Landy Leep (Oakland)
- Lead Education and Assistance Update: Kathy Moore
- Questions and Comments: Bridget Williams (USEPA)



Groundwater Update

Mark Walker
Hydrogeologist
Hydrometrics



Montana Environmental Trust Group, LLC
Trustee of the Montana Environmental Custodial Trust

2023 Groundwater Program Update

- ✓ Summary of Historic Contaminant Source Areas
- ✓ Groundwater Corrective Actions
- ✓ Monitoring Scope - Surface Water & Groundwater
- ✓ 2023 Surface Water Results
- ✓ 2023 Groundwater Arsenic and Selenium Plumes



Montana Environmental Trust Group, LLC
Trustee of the Montana Environmental Custodial Trust

Groundwater Contaminant Source Areas Addressed by Corrective Measures



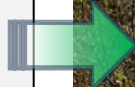
Montana Environmental Trust Group, LLC
Trustee of the Montana Environmental Custodial Trust

Corrective Measures Summary



Corrective Measures

- ✓ South Plant Hydraulic Control (SPHC)
- ✓ Source Removals
- ✓ Evapotranspiration (ET) Cover
- ✓ Speiss-Dross Slurry Wall
- ✓ Slag Pile Cover (Planned)

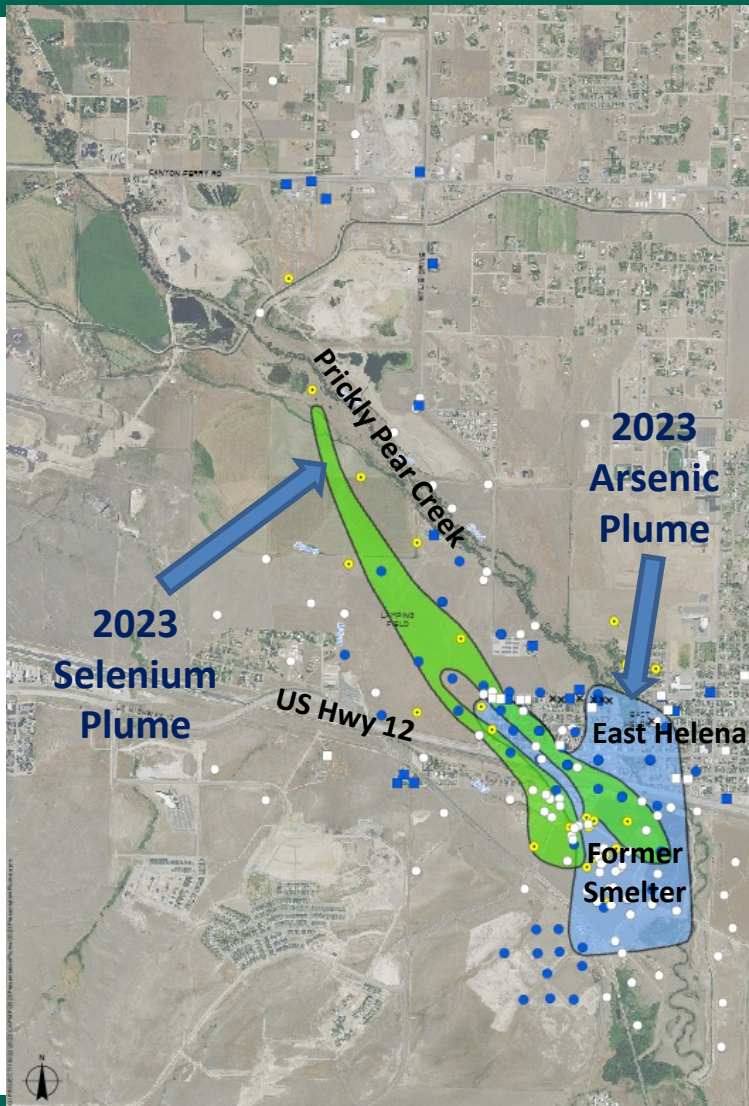


Primary Remaining Groundwater Contaminant Source Areas



Montana Environmental Trust Group, LLC
Trustee of the Montana Environmental Custodial Trust

2023 Interim Corrective Action Performance Monitoring Plan (CAPMP)

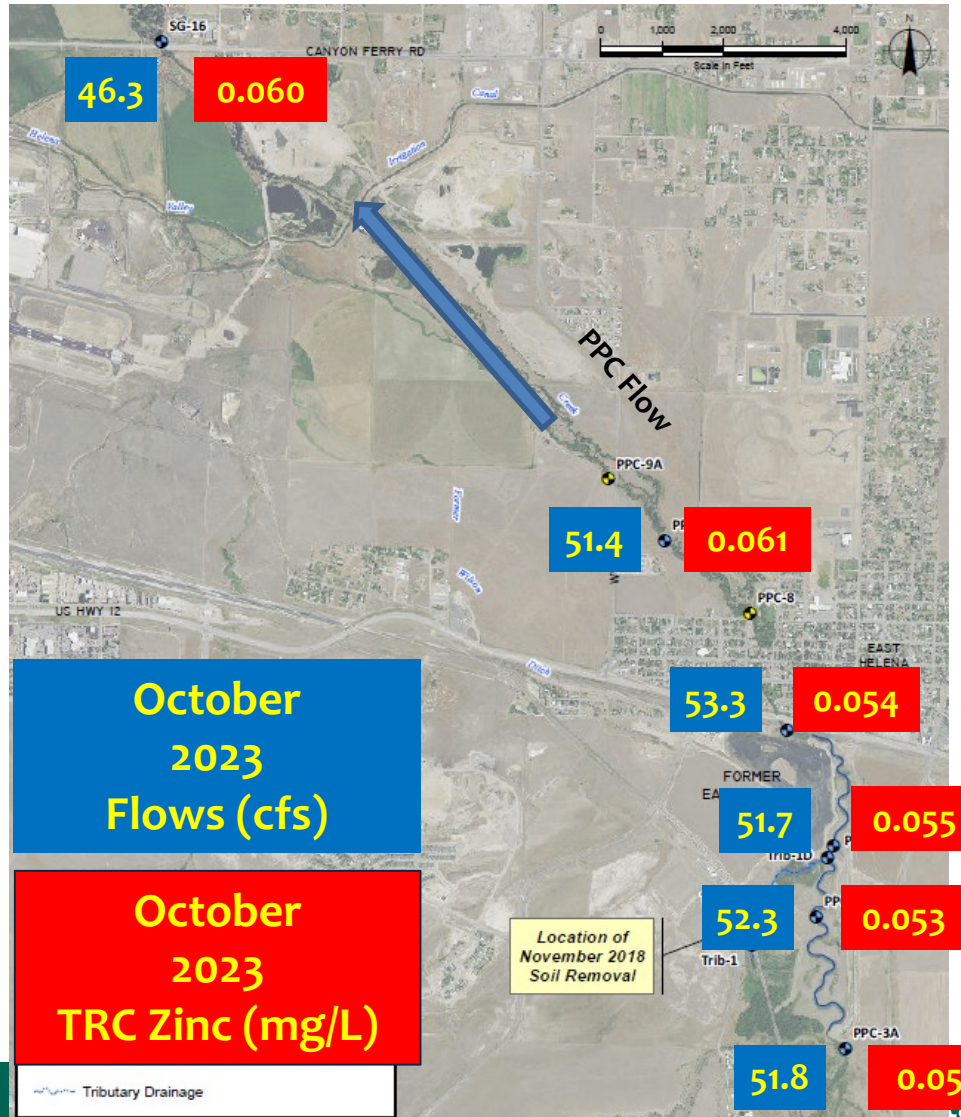


2023 Monitoring Scope

1. **Semi-annual Groundwater Monitoring**
 - Spring – 30 wells
 - Fall – 81 wells
2. **Semi-annual Residential / Water Supply Well Monitoring**
 - Spring & Fall – 20 wells
 - Includes City of East Helena supply wells
3. **Semi-annual Surface Water Monitoring**
 - Spring & Fall – 11 locations on Prickly Pear Creek and tributary drainage
4. **Water Level Measurements**
 - Spring & Fall – 180 monitoring wells and 10 surface water locations



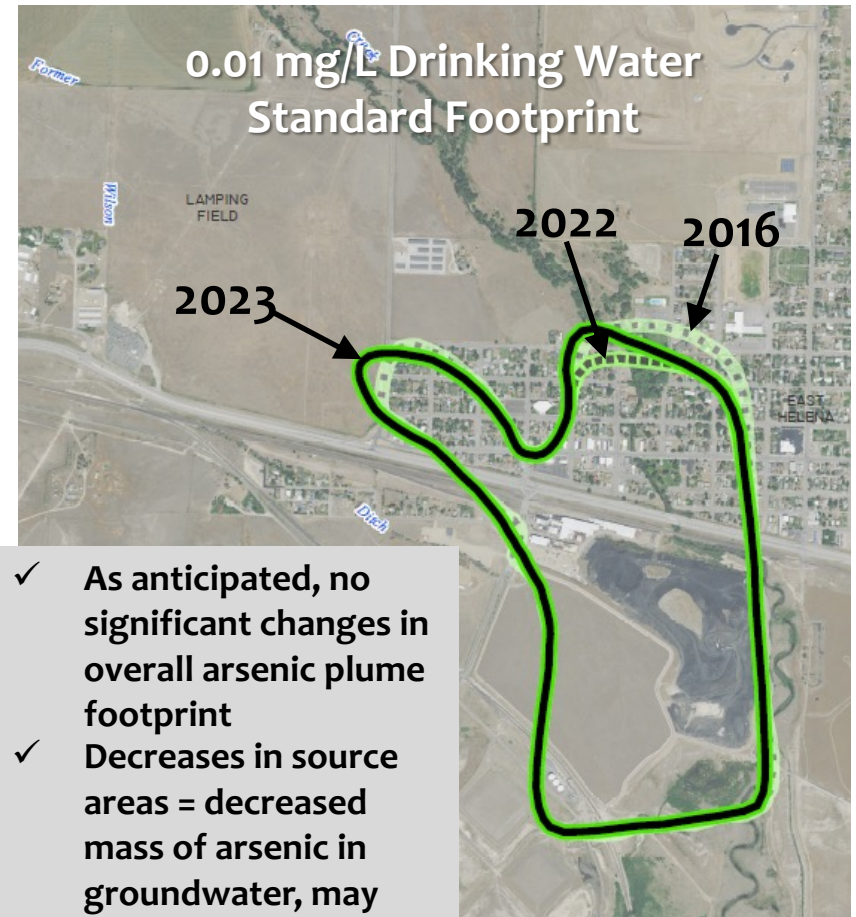
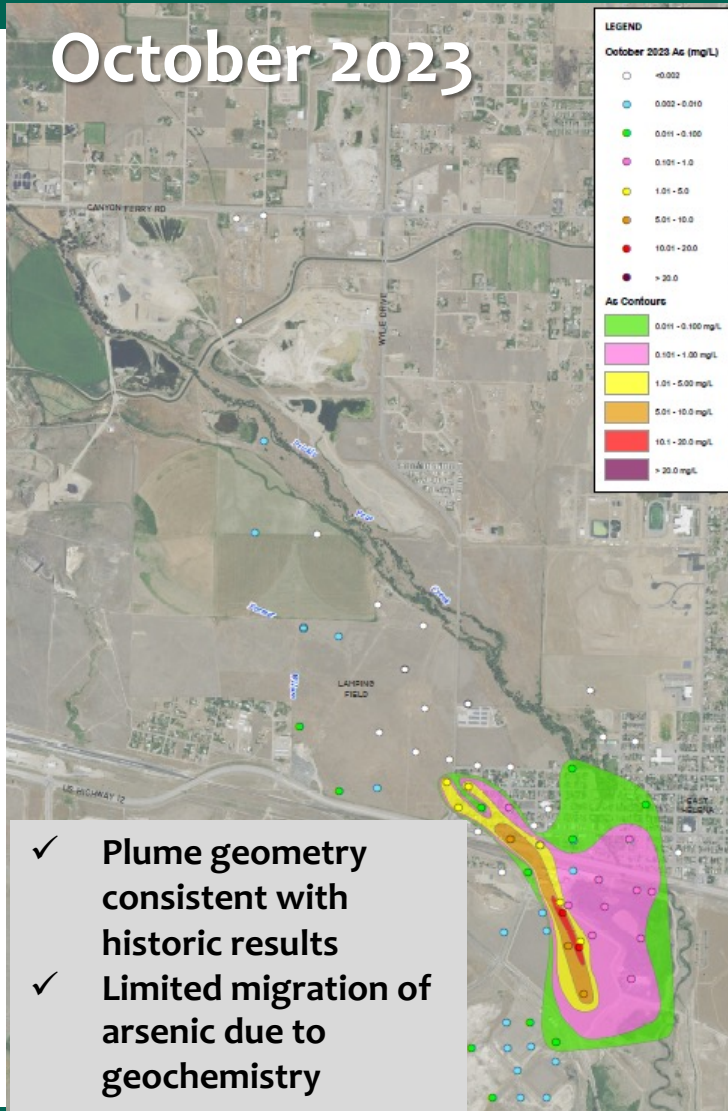
2023 Surface Water Results



- ✓ No significant net flow gains or losses adjacent to Facility
- ✓ Flow decreases downstream of Facility (losses to groundwater, irrigation diversions)
- ✓ No significant changes in metals concentrations from upstream to downstream; upstream sources indicated (Pb, Zn)
- ✓ Consistent with pre-remediation data

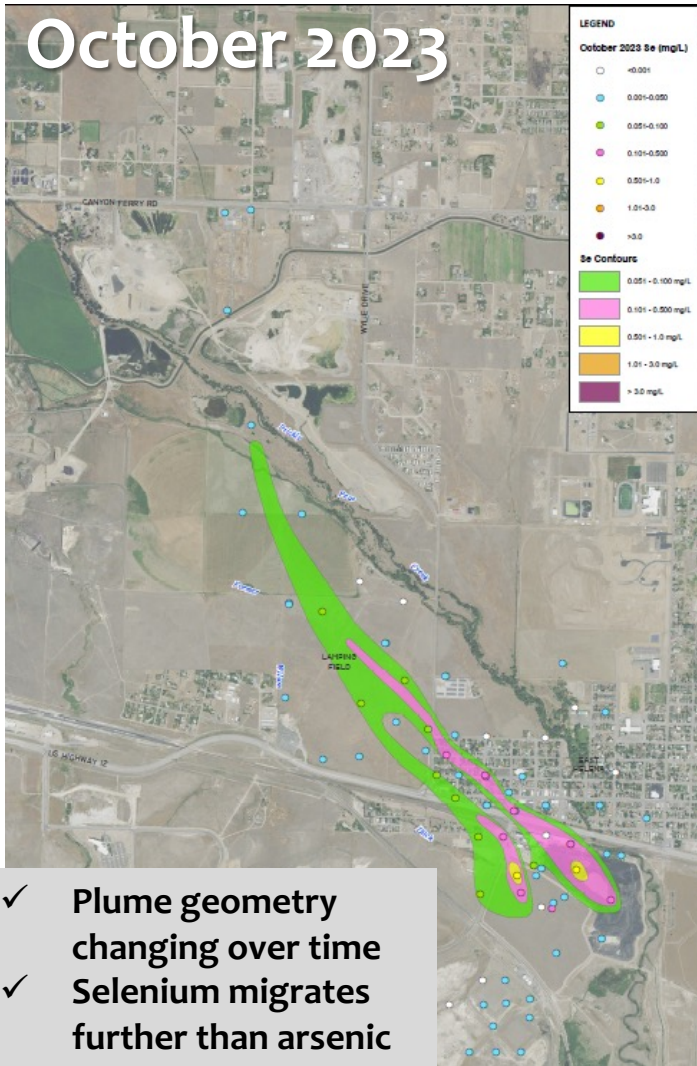


Groundwater Arsenic Plume

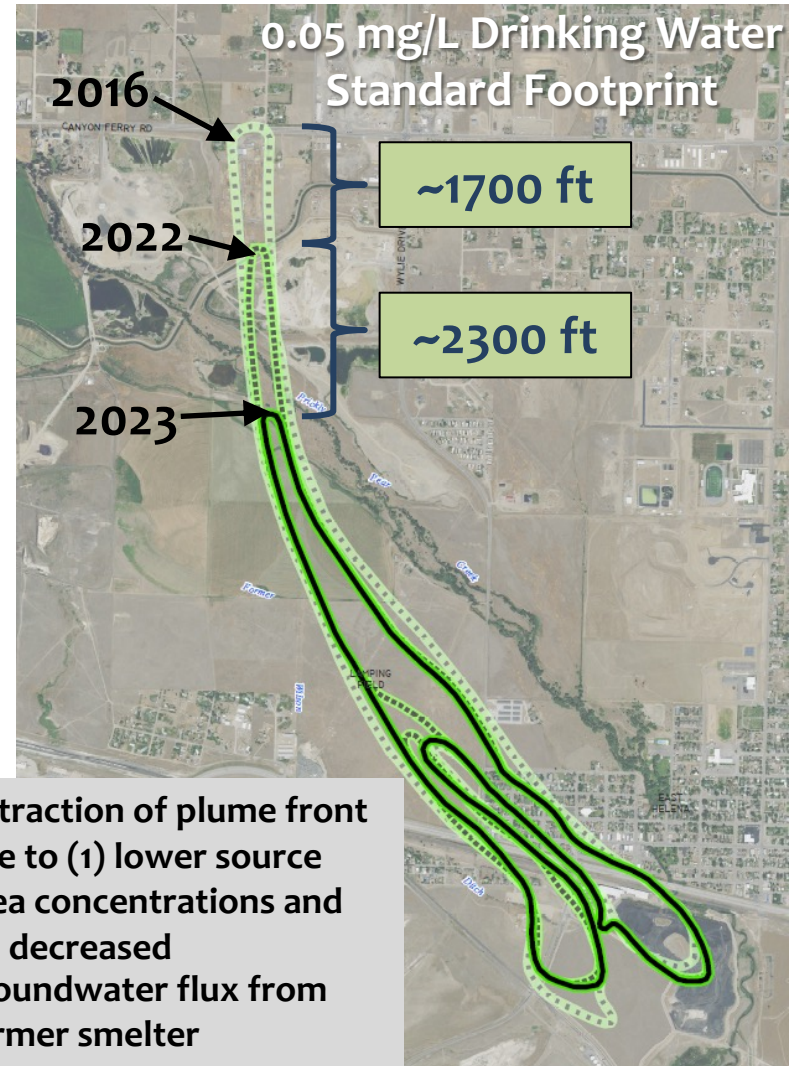


Groundwater Selenium Plume

October 2023



- ✓ Plume geometry changing over time
- ✓ Selenium migrates further than arsenic



- ✓ Retraction of plume front due to (1) lower source area concentrations and (2) decreased groundwater flux from former smelter



Montana Environmental Trust Group, LLC
Trustee of the Montana Environmental Custodial Trust

Cleanup and Redevelopment Update

Cindy Brooks

Managing Principal

Montana Environmental Trust Group (METG)



Montana Environmental Trust Group, LLC
Trustee of the Montana Environmental Custodial Trust

Cleanup Progress in 2023



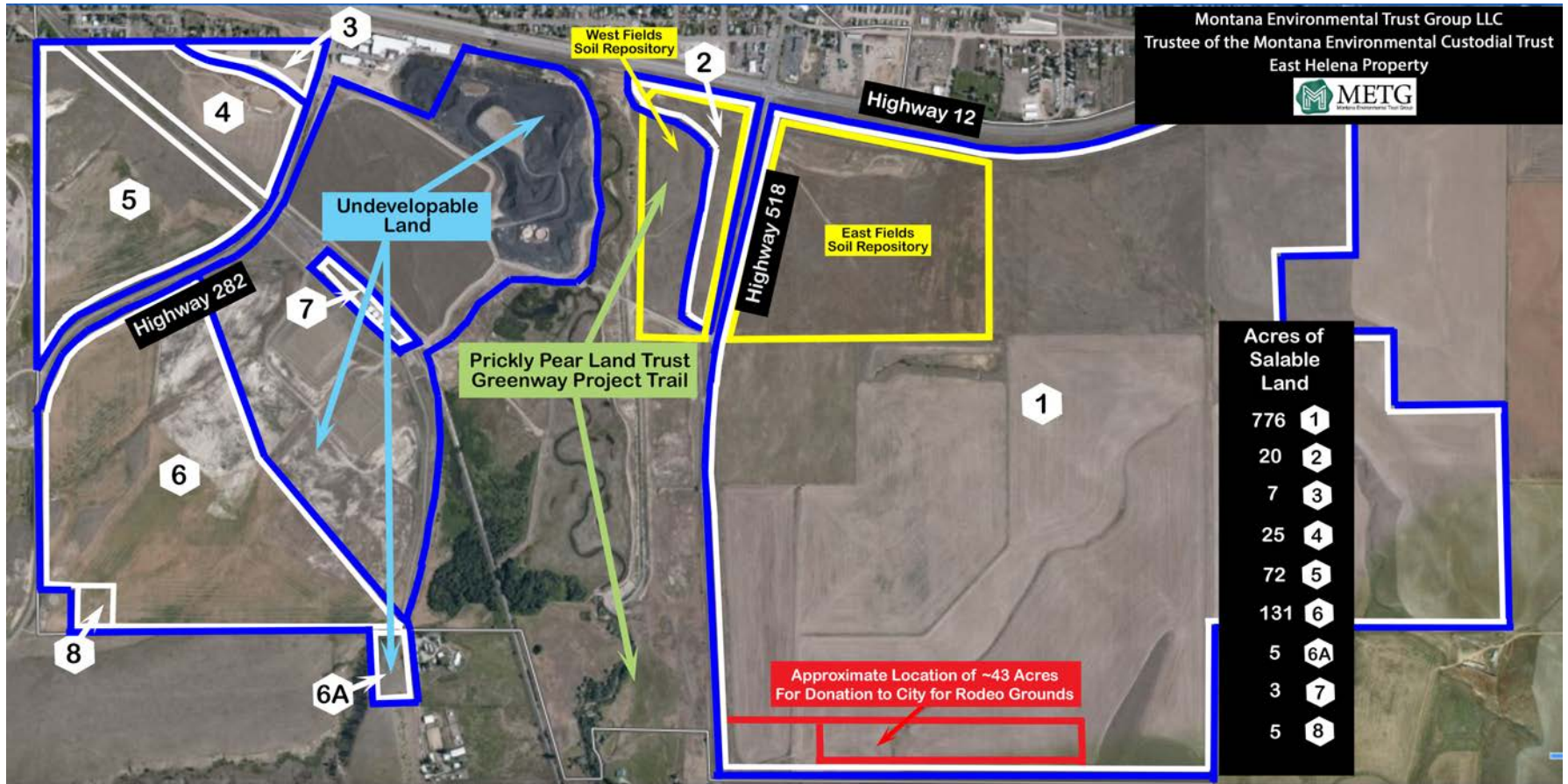
June 2023



October 2023

Prickly Pear Creek Realignment Project
Completed removal of Temporary Bypass Channel

Cleanup Progress in 2023

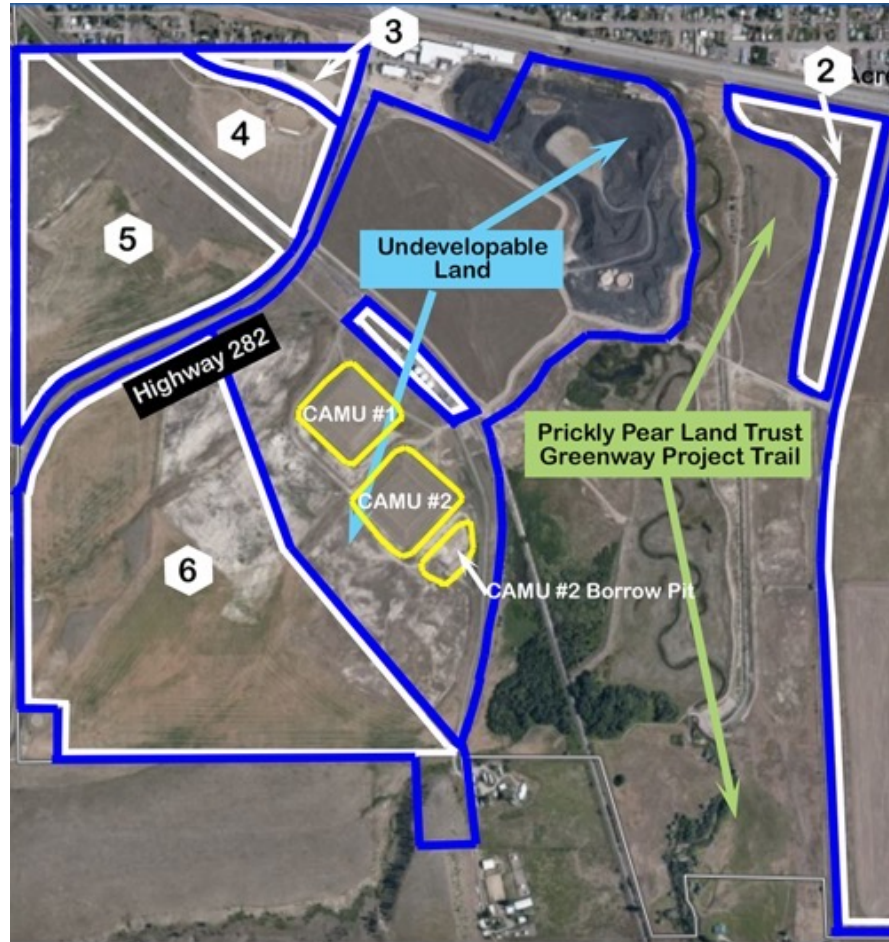


Closed East Fields Soil Repository
Established EPA-Approved Institutional Controls



Montana Environmental Trust Group, LLC
Trustee of the Montana Environmental Custodial Trust

Cleanup Progress in 2023



Created new, permanent Smelter Road Repository



Montana Environmental Trust Group, LLC
Trustee of the Montana Environmental Custodial Trust

Cleanup Progress in 2023

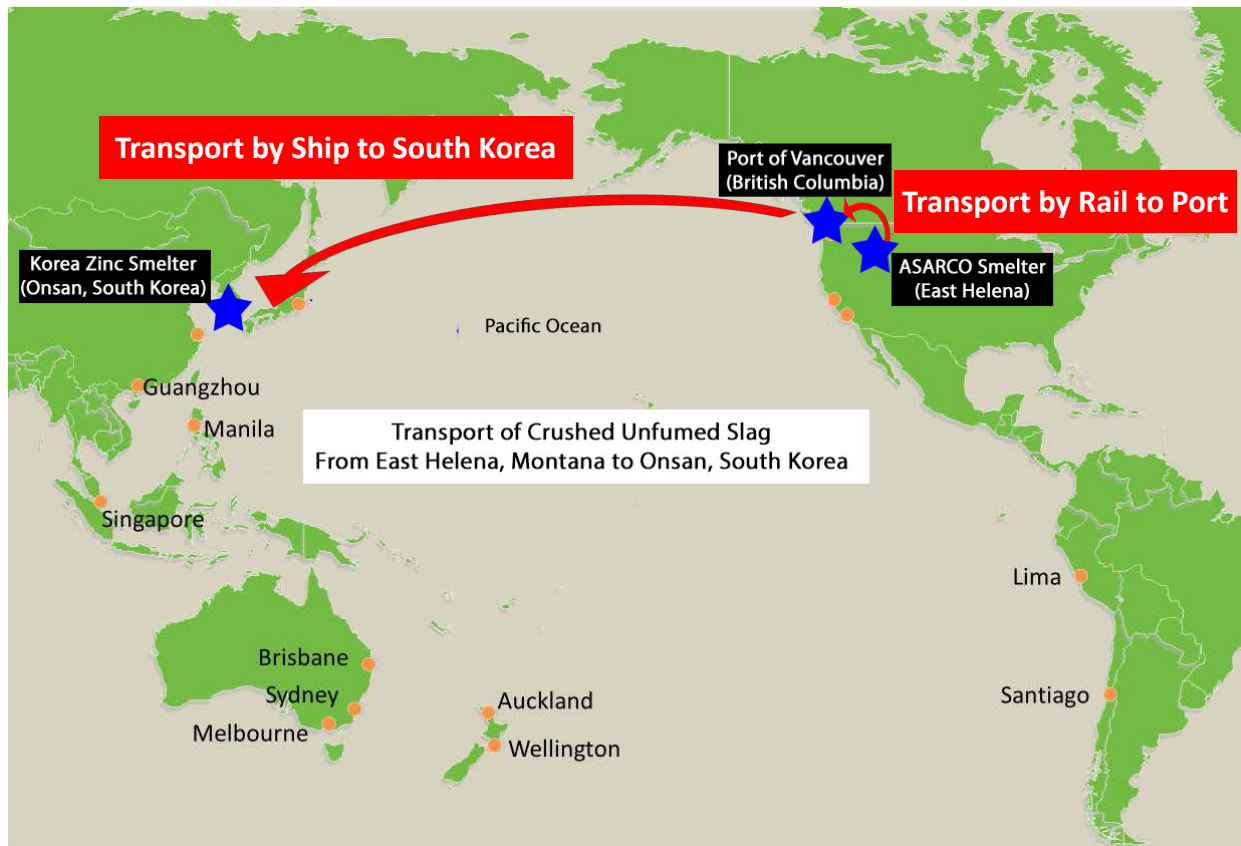


Unfumed Slag Removal Project

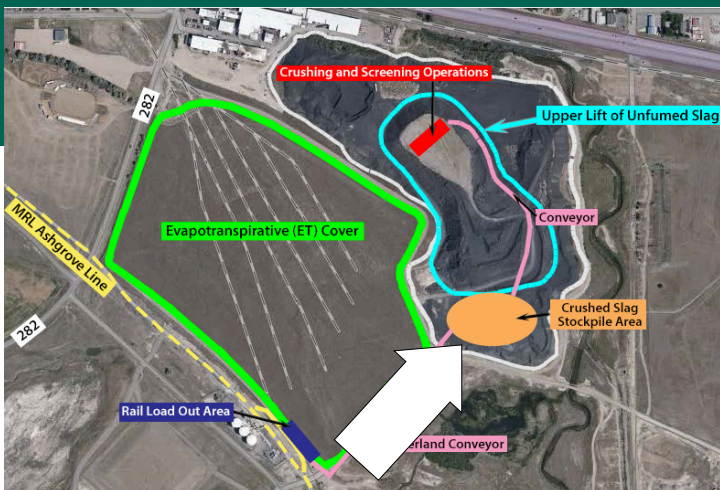
- ✓ Continued partnership with Metallica
- ✓ Goal: Remove upper lift (up to 2 million tons) of unfumed slag as primary remaining source of selenium loading to groundwater
- ✓ Crush unfumed slag, transport by conveyor to stockpile and rail loadout area
 - ✓ Loaded onto rail cars at Site

Unfumed Slag Removal Project

- ✓ Transport by rail from East Helena to Port of Vancouver, British Columbia
 - ✓ Load material on ships at Port of Vancouver
 - ✓ Transport to South Korea by oceangoing vessels



Unfumed Slag Removal Project



- ✓ Unfumed slag crushed to 2 inches
- ✓ Transported by conveyor to stockpile (140,000 tons)
- ✓ Ongoing/extensive dust control

Unfumed Slag Removal Project



Crushed slag loaded into feed hopper for transport by overland conveyor to rail loadout area

Unfumed Slag Removal Project

Transport of crushed slag by 1/4-mile overland conveyor to rail loadout area

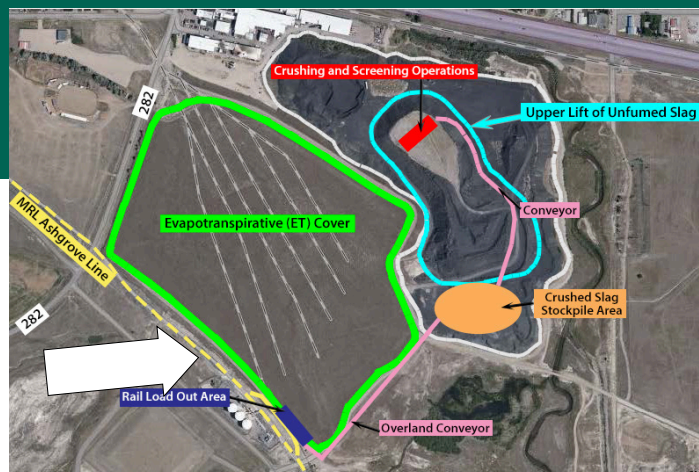


Unfumed Slag Removal Project

- ✓ Crushed slag transported by 1/4-mile overland conveyor to rail loadout area
- ✓ Transfer of crushed slag from overland conveyor to 150-ton surge hopper near rail loadout area



Unfumed Slag Removal Project



Crushed slag transferred from radial conveyor into closed (“hopper”) rail cars

Unfumed Slag Removal Project Challenges and Plans

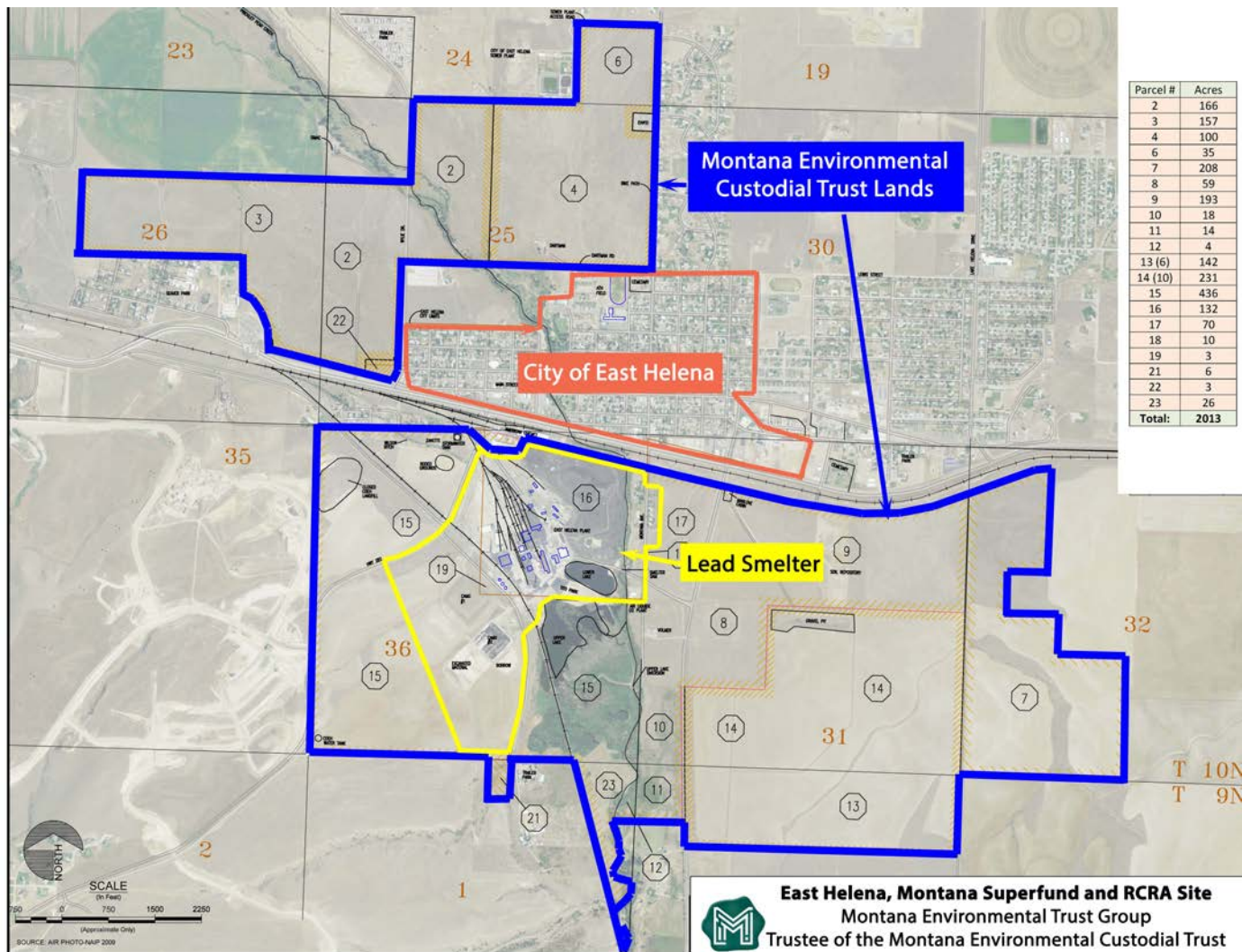
- ✓ Continued supply chain impacts
- ✓ Railroad challenges
 - Labor shortages and rail car shortages
 - Rail bridge weight constraints
- ✓ International Longshore and Warehouse Union Strike
 - Threat and actual strike closed Port of Vancouver 6/2023 to 8/2023
 - No shipments of UFS from East Helena for 2-1/2 months
 - Resumed shipments 8/2023
- ✓ Total shipments as of 10/31/2023: 109,878 tons
- ✓ Metallica committed to project
 - Multimillion \$ capital investment
 - Korea Zinc seeking additional material for smelter throughput
- ✓ Significant environmental and other project benefits
- ✓ METG will grade and cap slag pile after project complete in 12/2025



Montana Environmental Trust Group, LLC

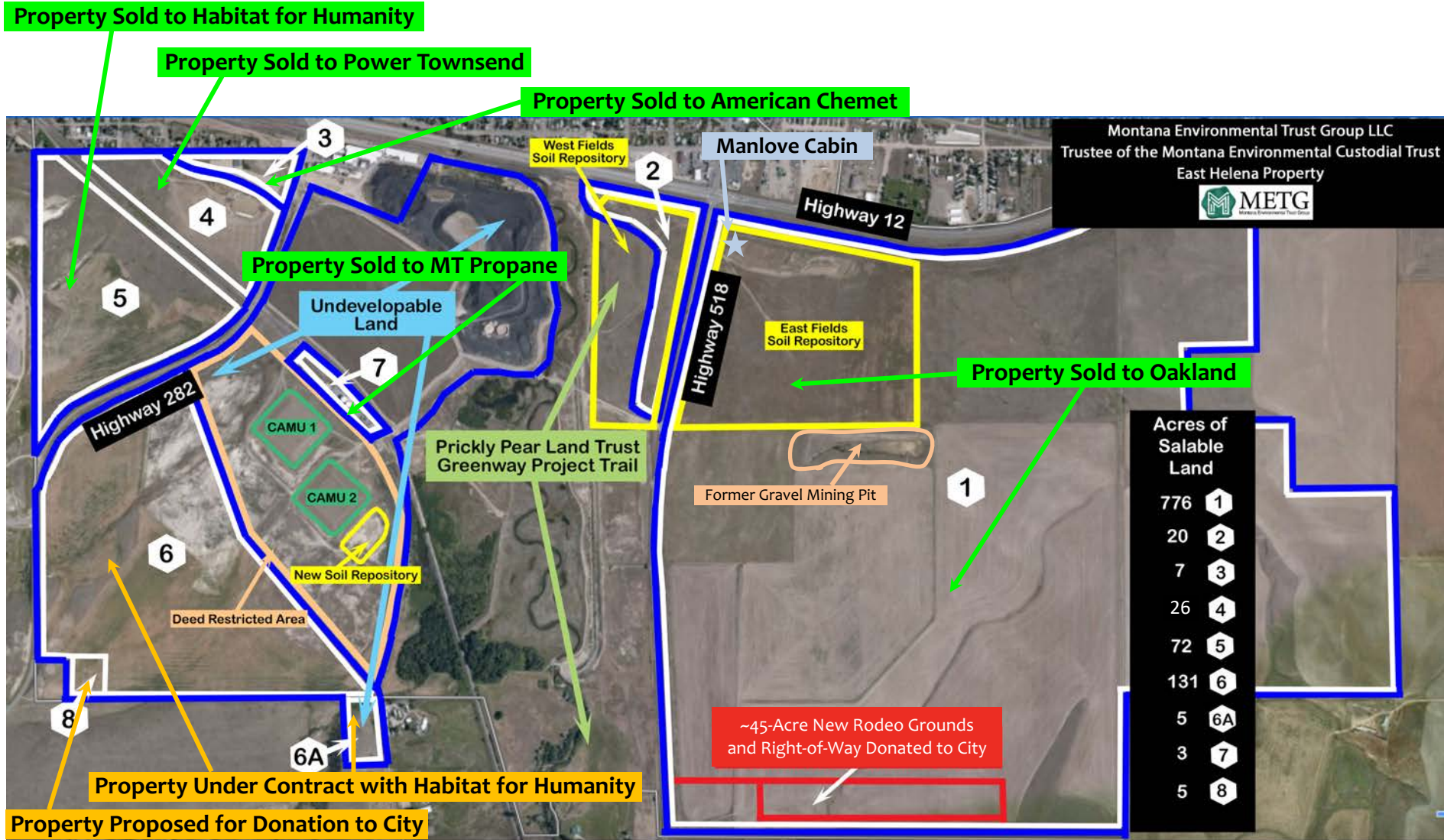
Trustee of the Montana Environmental Custodial Trust

Former Asarco Lands Transferred to METG in 2009



Montana Environmental Trust Group, LLC
Trustee of the Montana Environmental Custodial Trust

Redevelopment Progress in 2023

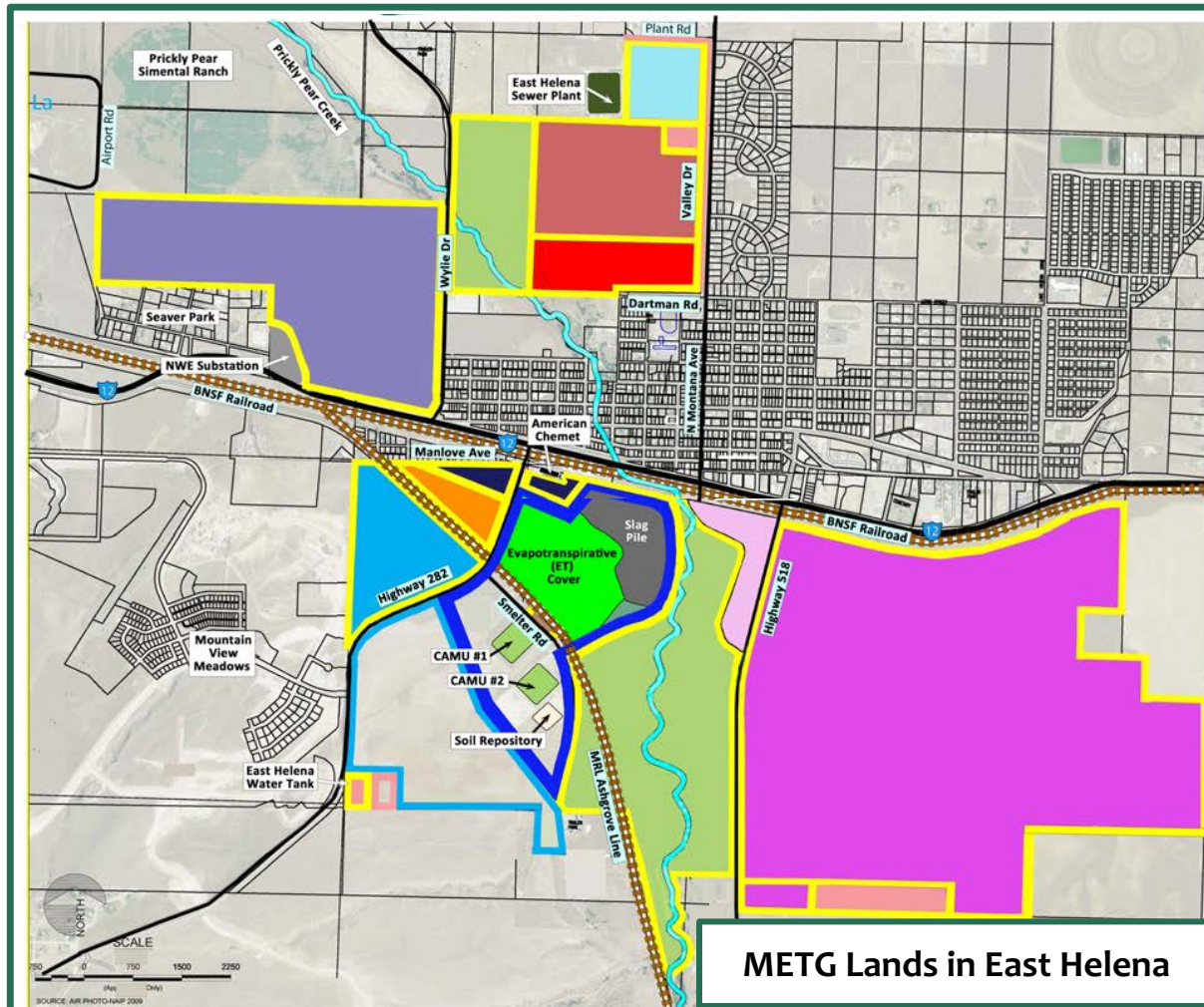


Sold 836 acres of property to 4 purchasers
Entered into contract with purchaser for 136 acres

Redevelopment Progress in East Helena

METG Land Sales and Transfers Through 11-15-2023		
Purchaser or Grantee*	New Use	Acres
East Helena Public Schools	Prickly Pear Elementary School	50
Town Pump	Mixed Use/Commercial Development	254
Oakland Companies	319-Home Highland Meadows Subdivision	100
East Helena Public Schools	East Helena High School	35
American Chemet	Expanded Manufacturing Plant and Office	13
Power Townsend	Light Manufacturing Center	26
Habitat for Humanity	257-Home Residential Subdivision	72
Oakland Companies	Commercial and 1000+ Residential Homes	731
Montana Propane	Intermodal Distribution Center	3
Prickly Pear Land Trust*	Greenway Trail	322
City of East Helena*	Roads, Utilities, City Services, and Rodeo Arena	57
Total East Helena Land Sales and Donations As Of 11/9/2023:		1,663
Land Acquired from ASARCO:		2,035

Redevelopment Progress in East Helena



- ✓ 372 of 2,035 acres remaining
- ✓ 20 acres available for sale
- ✓ 5 acres to be donated to City
- ✓ 211 acres undevelopable, unsalable land

Past and Future Growth in East Helena

- ✓ Current uses of former METG land
 - 2 schools (elementary and high school)
 - 300+ single family residential subdivision
 - 30,000 sq ft commercial center (under construction)
 - 8-mile trail system (under construction)
- ✓ Future uses of former METG land
 - 1,230+ new single and multi-family residential homes
 - Rail-accessed light manufacturing center
 - Commercial development (office buildings, restaurants, grocery stores, and hotel)
 - Additional parks and open space
 - New City services, rodeo arena, and schools
- ✓ < \$1.6 billion investment in infrastructure and property improvements, job, and taxes



Montana Environmental Trust Group, LLC

Trustee of the Montana Environmental Custodial Trust

Greenway Trail Progress and Plans

Mary Hollow

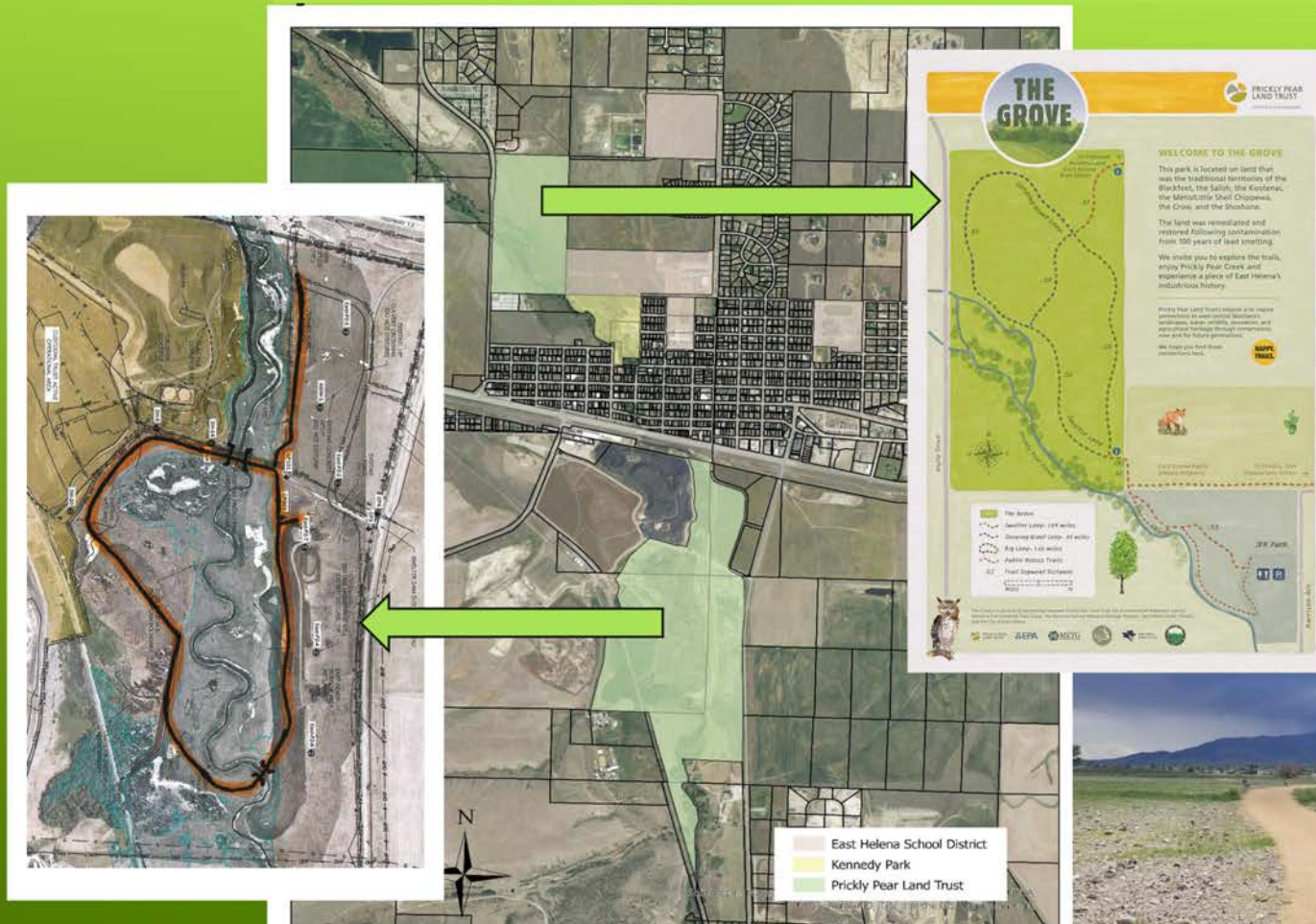
Executive Director

Prickly Pear Land Trust



Montana Environmental Trust Group, LLC
Trustee of the Montana Environmental Custodial Trust

Prickly Pear Land Trust (PPLT) Greenway Trail



Montana Environmental Trust Group, LLC
Trustee of the Montana Environmental Custodial Trust

Prickly Pear Land Trust – Greenway Project

Timeline

- Summer 2023 – The Grove opens (and floods!)
- Winter/Spring '23/'24 – East Helena outreach (Xmas stroll, etc.)
- Spring 2024 – construction completed at Prickly Pear Creek Park, park opens. Manlove cabin relocated to the park. The Grove is repaired.
- March/April 2024 – PPLT hires a parks coordinator to assist in managing the park
- 2025 and beyond – Work continues on Greenway project connecting by trail Montana City, East Helena and Helena



Nate Kopp – Program
and Trails Director
nate@pricklypearlt.org
(406)442-0490

Mary Hollow –
Executive Director



East Helena Christmas Stroll



Montana Environmental Trust Group, LLC
Trustee of the Montana Environmental Custodial Trust

East Helena Housing Plans and Goals

Jacob Kuntz

Executive Director

Helena Area Habitat for Humanity



Montana Environmental Trust Group, LLC
Trustee of the Montana Environmental Custodial Trust



Programs:

New Home Construction

Home Repairs

Financial Coaching

ReStore







1992 - 2015

- 30 new homes
- 3 home repairs

2015 - Present

- 41 new or substantially remodeled homes
 - 18 homes currently under construction
 - 45 home repairs

Current Staffing

- 16 full-time employees
 - 1 part-time employee
- 2 National AmeriCorps members



Thank You!

Contact:

Jacob Kuntz, Executive Director

406-531-6578

jacobk@helenahabitat.org



Redevelopment Progress and Plans

Landy Leap
Chief Operating Officer
Oakland Companies



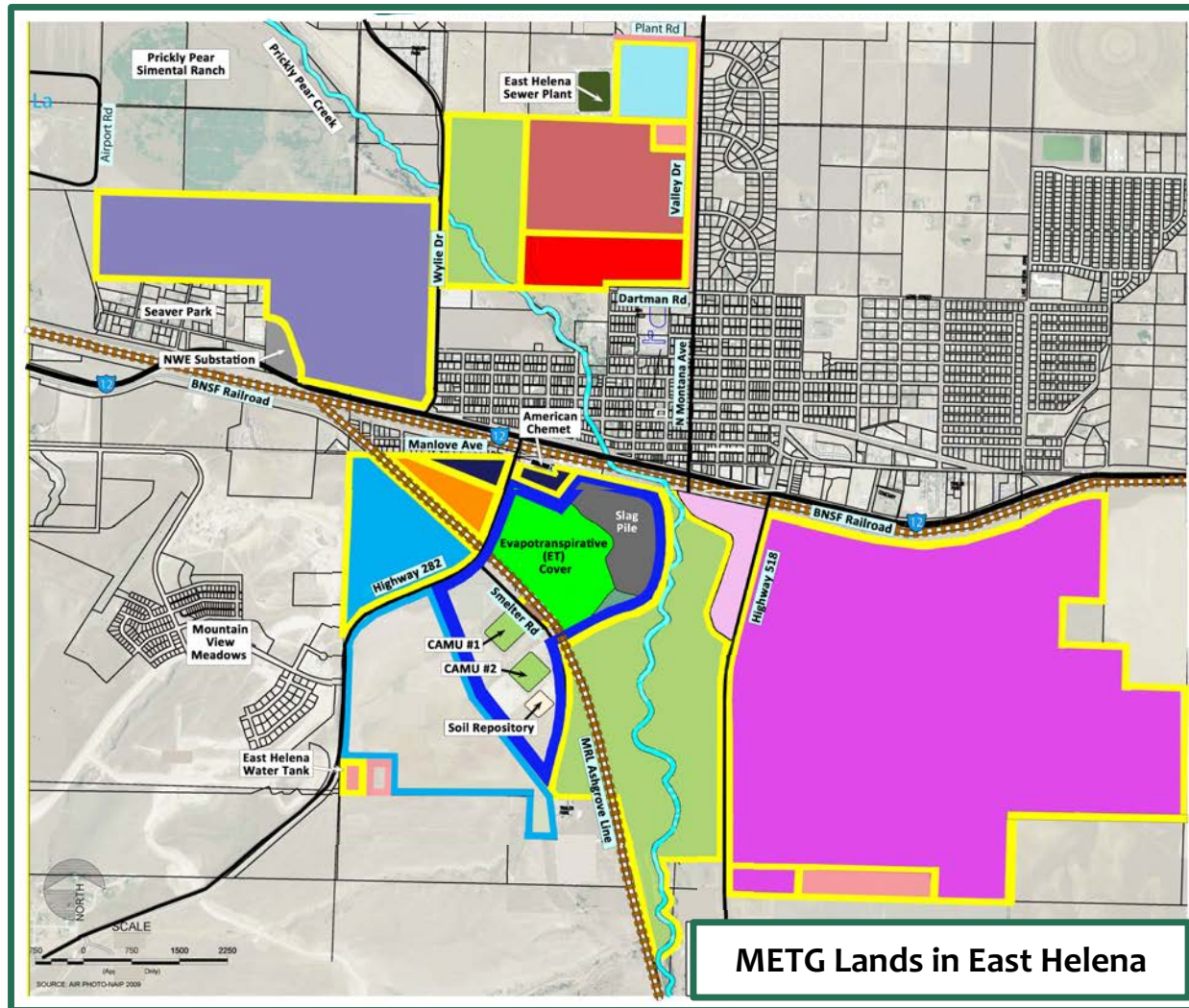
Montana Environmental Trust Group, LLC
Trustee of the Montana Environmental Custodial Trust

Highland Meadows Subdivision



Montana Environmental Trust Group, LLC
Trustee of the Montana Environmental Custodial Trust

Oakland Companies—Future of East Helena



Montana Environmental Trust Group, LLC
Trustee of the Montana Environmental Custodial Trust

Lead Education and Assistance Update

Kathy Moore

Environmental Division Administrator

Lewis and Clark County



Montana Environmental Trust Group, LLC

Trustee of the Montana Environmental Custodial Trust

East Helena Smelter Public Meeting

Questions and Comments?



Montana Environmental Trust Group, LLC
Trustee of the Montana Environmental Custodial Trust

East Helena Team Contact Information

✓ **Bridget Williams**

USEPA Remedial Project Manager

williams.bridget@epa.gov

406-594-8792

<https://cumulis.epa.gov/supercpad/cursites/csitinfo.cfm?id=0800377>

✓ **Cindy Brooks**

METG (Custodial Trust) Managing Principal

cb@g-etg.com

617-448-9762

<https://www.mtenvironmentaltrust.org>



Montana Environmental Trust Group, LLC

Trustee of the Montana Environmental Custodial Trust